

\$0 - 7729 85 Street, Edmonton

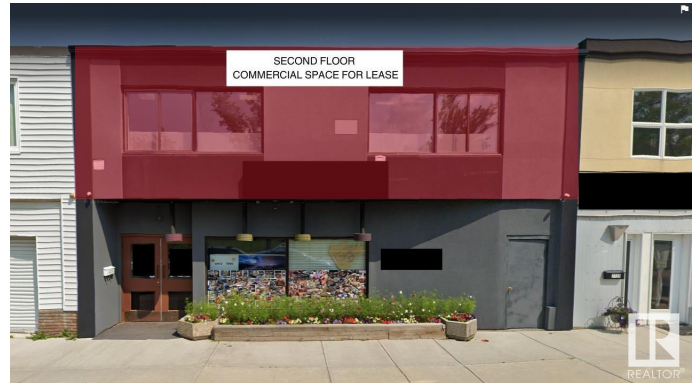
MLS® #E4398923

\$0

0 Bedroom, 0.00 Bathroom,
Retail on 0.00 Acres

King Edward Park, Edmonton, AB

1134 sq ft commercial space available for lease, suitable for office, retail, or personal service businesses. Located in a transforming and vibrant community with limited commercial space, just blocks from the LRT station. Gross Lease \$2500/month



Built in 1953

Essential Information

MLS® #	E4398923
Bathrooms	0.00
Acres	0.00
Year Built	1953
Type	Retail
Status	Active

Community Information

Address	7729 85 Street
Area	Edmonton
Subdivision	King Edward Park
City	Edmonton
County	ALBERTA
Province	AB
Postal Code	T6C 3B4

Exterior

Exterior	Modular
----------	---------

Construction Modular

Additional Information

Date Listed July 24th, 2024

Days on Market 260

Zoning Zone 17

DATA IS DEEMED RELIABLE BUT IS NOT GUARANTEED ACCURATE BY THE REALTORS® ASSOCIATION OF EDMONTON. COPYRIGHT 2025 BY THE REALTORS® ASSOCIATION OF EDMONTON. ALL RIGHTS RESERVED. Trademarks are owned or controlled by the Canadian Real Estate Association (CREA) and identify real estate professionals who are members of CREA (REALTOR®, REALTORS®) and/or the quality of services they provide (MLS®, Multiple Listing Service®)

Listing information last updated on April 10th, 2025 at 9:17pm MDT