

\$456,000 - 23219 On Twp 554 A 1/2 Mile West Of Hwy 28a, Gibbons

MLS® #E4412916

\$456,000

0 Bedroom, 0.00 Bathroom,
Land Commercial on 0.00 Acres

None, Gibbons, AB

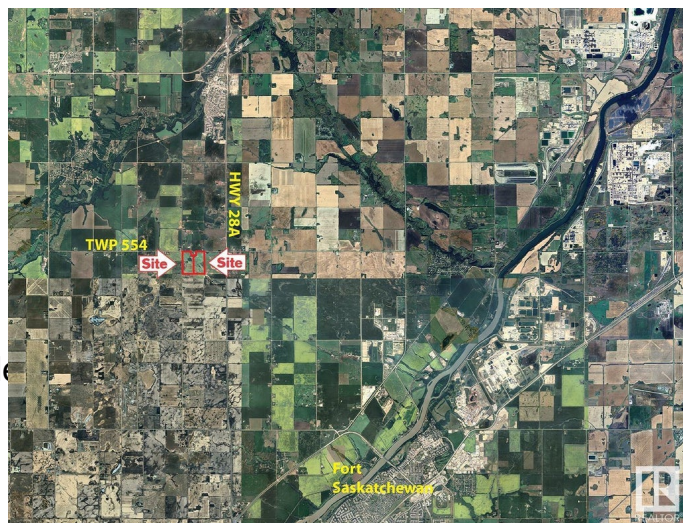
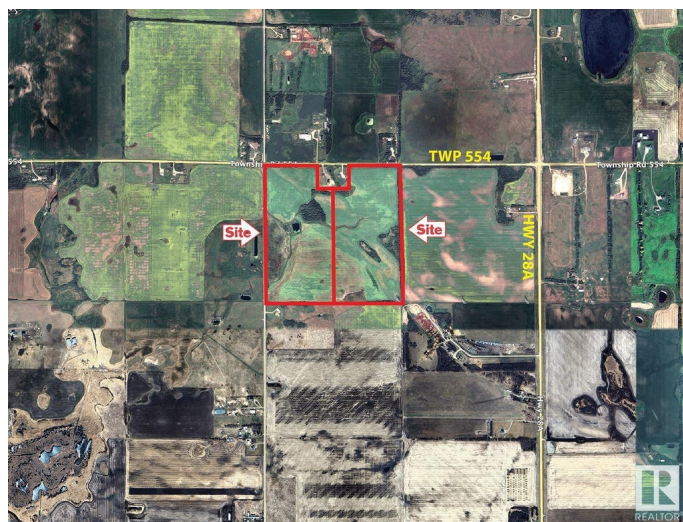
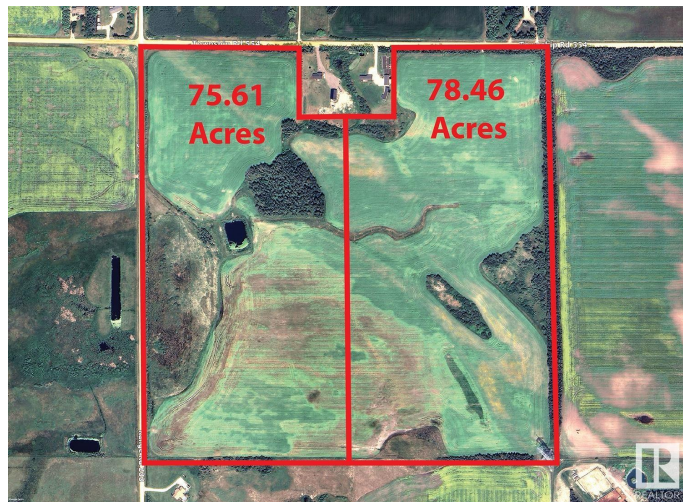
The Land is made up of 2 parcels: West:
75.61 Acres: \$439,000 East: 78.46 Acres:
\$456,000 TOTAL: 154.07Acres for \$895,000
Features: - Note: these parcels may be
purchased separately or both together. -Inside
Edmonton-Gibbons Land Corridor ! -Close to
Industrial Heartland and Edmonton. Great for
Country Residential Estate or Hobby Farm
Development or add to existing farm holdings !
-1/2 mile from Major Highway between
Edmonton and Fort McMurray !! -Great Road
Access from all directions !

Essential Information

MLS® #	E4412916
Price	\$456,000
Bathrooms	0.00
Acres	0.00
Type	Land Commercial
Status	Active

Community Information

Address	23219 On Twp 554 A 1/2 Mile
Area	Gibbons
Subdivision	None
City	Gibbons



County	ALBERTA
Province	AB
Postal Code	T0A 1N0

Additional Information

Date Listed	November 6th, 2024
Days on Market	165
Zoning	Zone 60

DATA IS DEEMED RELIABLE BUT IS NOT GUARANTEED ACCURATE BY THE REALTORS® ASSOCIATION OF EDMONTON. COPYRIGHT 2025 BY THE REALTORS® ASSOCIATION OF EDMONTON. ALL RIGHTS RESERVED.Trademarks are owned or controlled by the Canadian Real Estate Association (CREA) and identify real estate professionals who are members of CREA (REALTOR®, REALTORS®) and/or the quality of services they provide (MLS®, Multiple Listing Service®)

Listing information last updated on April 20th, 2025 at 1:02am MDT