

\$719,900 - 416 Pine Point(e), Leduc

MLS® #E4413360

\$719,900

5 Bedroom, 4.00 Bathroom, 2,408 sqft

Single Family on 0.00 Acres

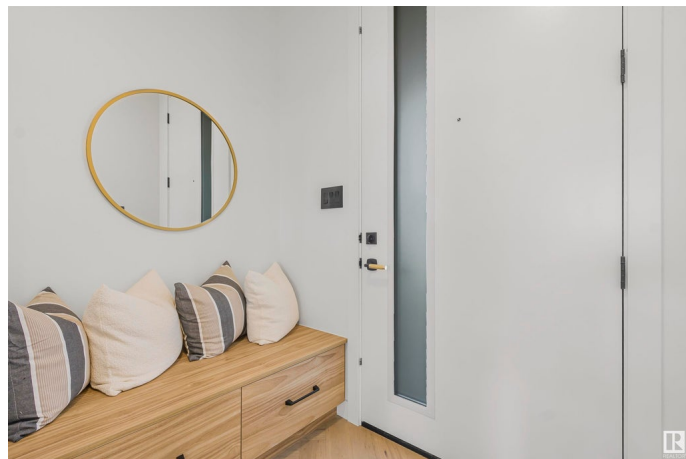
Woodbend, Leduc, AB

Opportunity to customize & upgraded New Detached Home. Main door entrance leads you to Open to above Living area. Family area with fireplace . Main floor bedroom with closet and full bath. BEAUTIFUL kitchen truly a masterpiece, unique Centre island. Spice Kitchen with lot of cabinets. Dining nook with access to backyard deck. Oak staircase leads to bonus room. Huge Primary br with 5pc fully custom ensuite & W/I closet. Three more br's with 2 bathrooms. Laundry on 2nd floor with sink. Side entrance for basement. This house checks off all the columns and you can choose all colors and finishes.

Built in 2024

Essential Information

MLS® #	E4413360
Price	\$719,900
Bedrooms	5
Bathrooms	4.00
Full Baths	4
Square Footage	2,408
Acres	0.00
Year Built	2024
Type	Single Family
Sub-Type	Detached Single Family
Style	2 Storey



Status Active

Community Information

Address 416 Pine Point(e)
Area Leduc
Subdivision Woodbend
City Leduc
County ALBERTA
Province AB
Postal Code T9E 1S7

Amenities

Amenities No Animal Home, No Smoking Home
Parking Double Garage Attached

Interior

Interior Features ensuite bathroom
Appliances None
Heating Forced Air-1, Natural Gas
Stories 2
Has Basement Yes
Basement Full, Unfinished

Exterior

Exterior Wood, Vinyl
Exterior Features Airport Nearby, Schools, Shopping Nearby
Roof Asphalt Shingles
Construction Wood, Vinyl
Foundation Concrete Perimeter

Additional Information

Date Listed November 11th, 2024
Days on Market 121
Zoning Zone 81

DATA IS DEEMED RELIABLE BUT IS NOT GUARANTEED ACCURATE BY THE REALTORS® ASSOCIATION OF EDMONTON. COPYRIGHT 2025 BY THE REALTORS® ASSOCIATION OF EDMONTON. ALL RIGHTS RESERVED. Trademarks are owned or controlled by the Canadian Real Estate Association (CREA) and identify real estate professionals who are members of CREA (REALTOR®, REALTORS®) and/or the quality of services they provide (MLS®, Multiple Listing Service®)

Listing information last updated on March 12th, 2025 at 6:32pm MDT