

\$0 - 1101 16 Avenue, Nisku

MLS® #E4413632

\$0

0 Bedroom, 0.00 Bathroom,
Industrial on 0.00 Acres

Nisku, Nisku, AB

- 16,802 sq.ft.± office/warehouse available for lease on 1.2 acres± - Two 10 ton bridge cranes - Improved and fenced yard - 18â€™™x18â€™™ grade loading bays with make up air and sumps - Easy access to high load corridor, Highway 625, and QEII Highway

Built in 2010

Essential Information

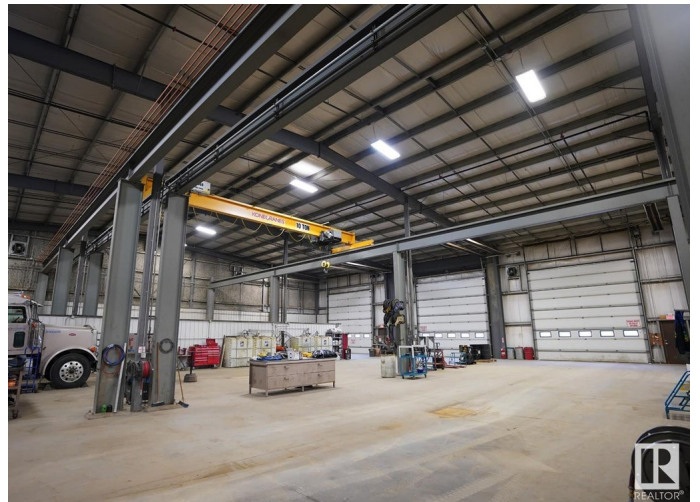
MLS® #	E4413632
Bathrooms	0.00
Acres	0.00
Year Built	2010
Type	Industrial
Status	Active

Community Information

Address	1101 16 Avenue
Area	Nisku
Subdivision	Nisku
City	Nisku
County	ALBERTA
Province	AB
Postal Code	T9E 0A8

Exterior

Exterior Concrete, Mixed



TOTAL: 32,636 SF±

Construction Concrete, Mixed

Additional Information

Date Listed November 14th, 2024

Days on Market 140

Zoning Zone 81

DATA IS DEEMED RELIABLE BUT IS NOT GUARANTEED ACCURATE BY THE REALTORS® ASSOCIATION OF EDMONTON. COPYRIGHT 2025 BY THE REALTORS® ASSOCIATION OF EDMONTON. ALL RIGHTS RESERVED. Trademarks are owned or controlled by the Canadian Real Estate Association (CREA) and identify real estate professionals who are members of CREA (REALTOR®, REALTORS®) and/or the quality of services they provide (MLS®, Multiple Listing Service®)

Listing information last updated on April 3rd, 2025 at 1:47pm MDT