

\$779,900 - 330 Canter Wynd, Sherwood Park

MLS® #E4416148

\$779,900

3 Bedroom, 2.50 Bathroom, 2,468 sqft
Single Family on 0.00 Acres

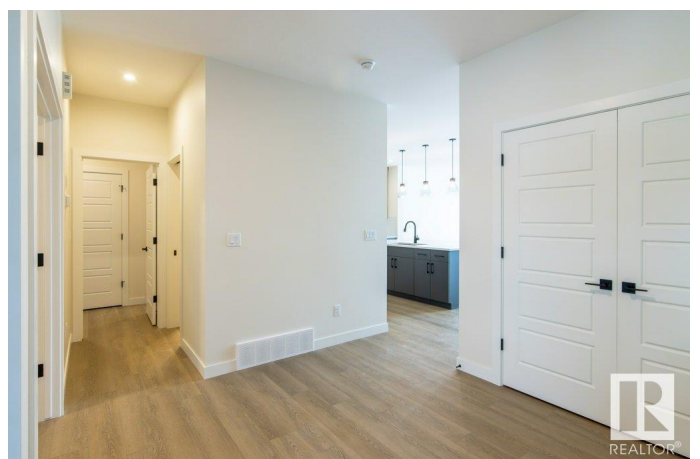
Cambrian, Sherwood Park, AB

EXECUTIVE 2 STOREY WALKOUT! Built by San Rufo Homes, the Joseph III model offers over 2300 sq.ft. of luxurious living space. Backing onto a pond – the location is unbeatable! Featuring 3 bedrooms & 2.5 baths, the superior craftsmanship & attention to detail is evident as soon as you step inside. Beautifully upgraded with quartz counters, designer lighting, high end flooring and quality cabinetry throughout. The chef’s kitchen is a dream with a large walk-thru pantry, fully fitted mudroom & dining area with patio doors leading onto the deck. The bright, open to below, great room has huge windows flooding the home with natural light & is anchored by a sleek linear fireplace. The upper level has a spacious bonus room, laundry & 3 bedrooms, the primary with a 5 pce ensuite, drop in tub & separate glass shower. The WALK-OUT basement with SEPARATE SIDE ENTRANCE offers lots more potential opportunities & living space. Surrounded by natural beauty, scenic walking trails & park space – modern living at its finest!

Built in 2024

Essential Information

| | |
|--------|-----------|
| MLS® # | E4416148 |
| Price | \$779,900 |



| | |
|----------------|------------------------|
| Bedrooms | 3 |
| Bathrooms | 2.50 |
| Full Baths | 2 |
| Half Baths | 1 |
| Square Footage | 2,468 |
| Acres | 0.00 |
| Year Built | 2024 |
| Type | Single Family |
| Sub-Type | Detached Single Family |
| Style | 2 Storey |
| Status | Active |

Community Information

| | |
|-------------|-----------------|
| Address | 330 Canter Wynd |
| Area | Sherwood Park |
| Subdivision | Cambrian |
| City | Sherwood Park |
| County | ALBERTA |
| Province | AB |
| Postal Code | T8H 2Z7 |

Amenities

| | |
|----------------|--|
| Amenities | Deck, Detectors Smoke, Walkout Basement, See Remarks |
| Parking Spaces | 4 |
| Parking | Double Garage Attached |
| Is Waterfront | Yes |

Interior

| | |
|-------------------|---------------------------|
| Interior Features | ensuite bathroom |
| Appliances | None |
| Heating | Forced Air-1, Natural Gas |
| Fireplace | Yes |
| Fireplaces | Insert |
| Stories | 2 |
| Has Basement | Yes |
| Basement | Full, Unfinished |

Exterior

| | |
|----------|--------------------|
| Exterior | Wood, Stone, Vinyl |
|----------|--------------------|

| | |
|-------------------|--|
| Exterior Features | Creek, Landscaped, Park/Reserve, Playground Nearby, Schools, Shopping Nearby |
| Roof | Asphalt Shingles |
| Construction | Wood, Stone, Vinyl |
| Foundation | Concrete Perimeter |

Additional Information

| | |
|----------------|---------------------|
| Date Listed | December 13th, 2024 |
| Days on Market | 91 |
| Zoning | Zone 25 |

DATA IS DEEMED RELIABLE BUT IS NOT GUARANTEED ACCURATE BY THE REALTORS® ASSOCIATION OF EDMONTON. COPYRIGHT 2025 BY THE REALTORS® ASSOCIATION OF EDMONTON. ALL RIGHTS RESERVED. Trademarks are owned or controlled by the Canadian Real Estate Association (CREA) and identify real estate professionals who are members of CREA (REALTOR®, REALTORS®) and/or the quality of services they provide (MLS®, Multiple Listing Service®)

Listing information last updated on March 13th, 2025 at 10:02pm MDT