

\$379,000 - 16338 Township Road 675, Rural Lac La Biche County

MLS® #E4416624

\$379,000

4 Bedroom, 3.00 Bathroom, 1,383 sqft

Rural on 2.59 Acres

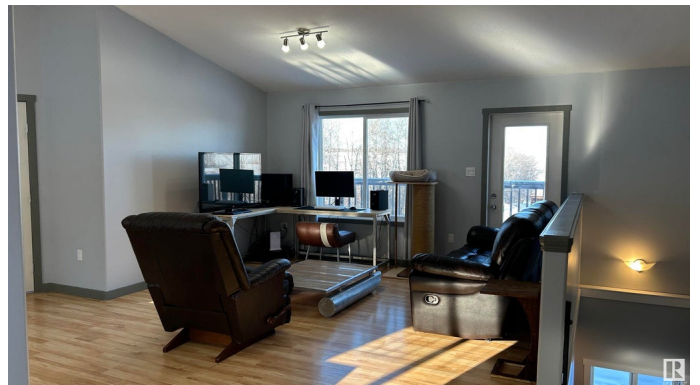
Plamondon Bay, Rural Lac La Biche County, AB

Nestled near Plamondon and close to Lac La Biche, this charming bungalow-style home offers serene living with a walk-out basement and breathtaking views of pastures in the valley below. The heated detached garage provides ample warm storage for two vehicles and outdoor toys. With an open-plan three-bedroom layout, there is plenty of opportunity for family gatherings or entertaining friends. A wrap-around deck offers ample of sunny spots all through the warmer months and the half finished basement is perfect for additional living space or a potential secondary suite. This is an outdoor enthusiast's dream, offering easy access to skidoo lng, snowshoeing, fishing, and abundant wildlife in a quiet neighborhood. If you feel it is time to escape to the country this property ticks all the boxes.

Built in 2010

Essential Information

MLS® #	E4416624
Price	\$379,000
Bedrooms	4
Bathrooms	3.00



Full Baths	3
Square Footage	1,383
Acres	2.59
Year Built	2010
Type	Rural
Sub-Type	Detached Single Family
Style	Bungalow
Status	Active

Community Information

Address	16338 Township Road 675
Area	Rural Lac La Biche County
Subdivision	Plamondon Bay
City	Rural Lac La Biche County
County	ALBERTA
Province	AB
Postal Code	T0A 2T0

Amenities

Features	Ceiling 9 ft.
----------	---------------

Interior

Interior Features	ensuite bathroom
Heating	Forced Air-1, Natural Gas
Stories	1
Has Basement	Yes
Basement	Full, Partially Finished

Exterior

Exterior	Concrete
Exterior Features	See Remarks
Construction	Concrete
Foundation	Concrete Perimeter

Additional Information

Date Listed	December 22nd, 2024
Days on Market	117
Zoning	Zone 60

DATA IS DEEMED RELIABLE BUT IS NOT GUARANTEED ACCURATE BY THE REALTORS® ASSOCIATION OF

EDMONTON. COPYRIGHT 2025 BY THE REALTORS® ASSOCIATION OF EDMONTON. ALL RIGHTS RESERVED.Trademarks are owned or controlled by the Canadian Real Estate Association (CREA) and identify real estate professionals who are members of CREA (REALTOR®, REALTORS®) and/or the quality of services they provide (MLS®, Multiple Listing Service®)

Listing information last updated on April 18th, 2025 at 7:17pm MDT