

\$199,900 - 128 15499 Castle Downs Road, Edmonton

MLS® #E4421316

\$199,900

2 Bedroom, 2.00 Bathroom, 1,166 sqft
Condo / Townhouse on 0.00 Acres

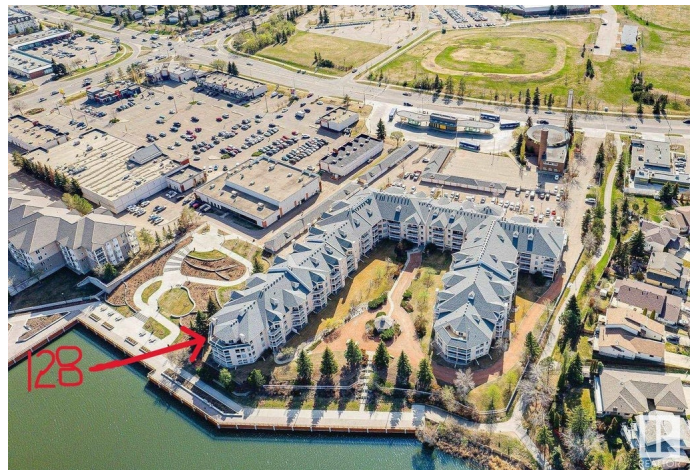
Beaumaris, Edmonton, AB

LAKEFRONT only steps away! Partial LAKE VIEW from your patio! 100 metres to gorgeous trail around Lake Beaumaris. Beside a public park overlooking the lake! Very quiet, private, yet secure grounds. 18+ adult living. Squeaky clean unit has brand-new luxury vinyl plank flooring & new 3-1/4" baseboards in the wide open living, dining, kitchen, office niche, entry areas + the main bath & laundry! Updates include; most lighting; oval door knobs, hinges, striker plates & doorstops; oval bi-fold knobs; kitchen pull down faucet & modern cabinet handles; virtually all brass removed! Gas fireplace; Building features a small swimming pool, exercise room, lounge area, active social club and small library;

Built in 1993

Essential Information

| | |
|----------------|-------------------|
| MLS® # | E4421316 |
| Price | \$199,900 |
| Bedrooms | 2 |
| Bathrooms | 2.00 |
| Full Baths | 2 |
| Square Footage | 1,166 |
| Acres | 0.00 |
| Year Built | 1993 |
| Type | Condo / Townhouse |



| | |
|----------|------------------------|
| Sub-Type | Lowrise Apartment |
| Style | Single Level Apartment |
| Status | Active |

Community Information

| | |
|-------------|-----------------------------|
| Address | 128 15499 Castle Downs Road |
| Area | Edmonton |
| Subdivision | Beaumaris |
| City | Edmonton |
| County | ALBERTA |
| Province | AB |
| Postal Code | T5K 5Y3 |

Amenities

| | |
|----------------|--|
| Amenities | Exercise Room, No Animal Home, No Smoking Home, Patio, Pool-Indoor, Recreation Room/Centre, Social Rooms |
| Parking Spaces | 1 |
| Parking | Stall |
| Is Waterfront | Yes |
| Has Pool | Yes |

Interior

| | |
|-------------------|--|
| Interior Features | ensuite bathroom |
| Appliances | Dishwasher-Built-In, Dryer, Hood Fan, Refrigerator, Stove-Electric, Washer, Window Coverings |
| Heating | Hot Water, Natural Gas |
| Fireplace | Yes |
| Fireplaces | Mantel, Tile Surround |
| # of Stories | 4 |
| Stories | 1 |
| Has Basement | Yes |
| Basement | None, No Basement |

Exterior

| | |
|-------------------|--|
| Exterior | Wood, Asphalt, Stucco |
| Exterior Features | Backs Onto Lake, Fenced, Lake Access Property, No Through Road, Treed Lot, View Lake |
| Roof | Asphalt Shingles |
| Construction | Wood, Asphalt, Stucco |

Foundation Concrete Perimeter

Additional Information

Date Listed February 12th, 2025

Days on Market 51

Zoning Zone 27

Condo Fee \$569

DATA IS DEEMED RELIABLE BUT IS NOT GUARANTEED ACCURATE BY THE REALTORS® ASSOCIATION OF EDMONTON. COPYRIGHT 2025 BY THE REALTORS® ASSOCIATION OF EDMONTON. ALL RIGHTS RESERVED. Trademarks are owned or controlled by the Canadian Real Estate Association (CREA) and identify real estate professionals who are members of CREA (REALTOR®, REALTORS®) and/or the quality of services they provide (MLS®, Multiple Listing Service®)

Listing information last updated on April 3rd, 2025 at 11:17pm MDT