

\$189,900 - 108 25 Element Dr, St. Albert

MLS® #E4421524

\$189,900

2 Bedroom, 1.00 Bathroom, 678 sqft

Condo / Townhouse on 0.00 Acres

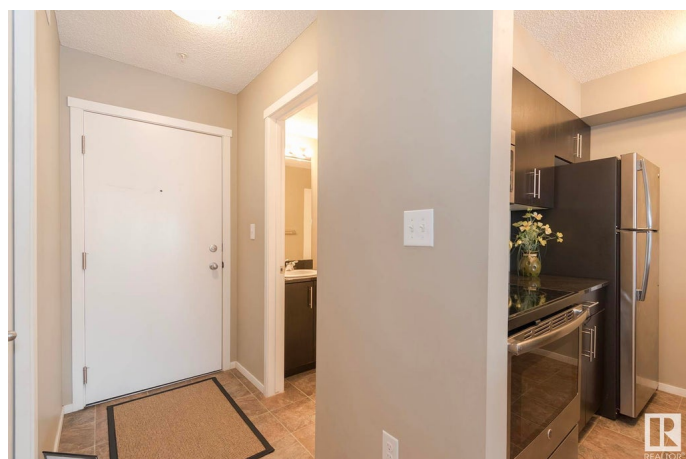
Erin Ridge North, St. Albert, AB

Attention first-time buyers! Why rent when you can own this beautiful 2-bedroom condo. Both bedrooms are generously sized, although one would make a perfect guest room or home office, how ever you want it. You will love the beautifully designed kitchen complete with solid wood cabinets, elegant black granite countertops, and stainless steel appliances offering both style and durability. Enjoy the convenience of in-suite laundry and a north-facing patio, ideal spot for a BBQ. Your parking stall is close by your unit. Condo fees include heat and water, keeping costs manageable. This prime location offers easy access to shopping, schools, ponds, walking trails, and bike pathsâ€”all within walking distance. Donâ€™t miss out on this incredible opportunity to own a stylish, affordable home in a fantastic community!

Built in 2017

Essential Information

MLS® #	E4421524
Price	\$189,900
Bedrooms	2
Bathrooms	1.00
Full Baths	1
Square Footage	678
Acres	0.00



Year Built	2017
Type	Condo / Townhouse
Sub-Type	Lowrise Apartment
Style	Single Level Apartment
Status	Active

Community Information

Address	108 25 Element Dr
Area	St. Albert
Subdivision	Erin Ridge North
City	St. Albert
County	ALBERTA
Province	AB
Postal Code	T8N 7S1

Amenities

Amenities	Parking-Visitor, Patio, Security Door, Sprinkler System-Fire, Vinyl Windows
Parking Spaces	1
Parking	Stall

Interior

Appliances	Dishwasher-Built-In, Dryer, Microwave Hood Fan, Refrigerator, Stove-Electric, Washer, Window Coverings
Heating	Baseboard, Natural Gas
# of Stories	4
Stories	4
Has Basement	Yes
Basement	None, No Basement

Exterior

Exterior	Wood, Brick, Vinyl
Exterior Features	Golf Nearby, Landscaped, Playground Nearby, Public Swimming Pool, Public Transportation, Schools, Shopping Nearby
Roof	Asphalt Shingles
Construction	Wood, Brick, Vinyl
Foundation	Concrete Perimeter

Additional Information

Date Listed	February 14th, 2025
-------------	---------------------

Days on Market	26
Zoning	Zone 24
Condo Fee	\$384

DATA IS DEEMED RELIABLE BUT IS NOT GUARANTEED ACCURATE BY THE REALTORS® ASSOCIATION OF EDMONTON. COPYRIGHT 2025 BY THE REALTORS® ASSOCIATION OF EDMONTON. ALL RIGHTS RESERVED. Trademarks are owned or controlled by the Canadian Real Estate Association (CREA) and identify real estate professionals who are members of CREA (REALTOR®, REALTORS®) and/or the quality of services they provide (MLS®, Multiple Listing Service®)

Listing information last updated on March 12th, 2025 at 6:02pm MDT