

## \$429,900 - 114 Willow's End, Stony Plain

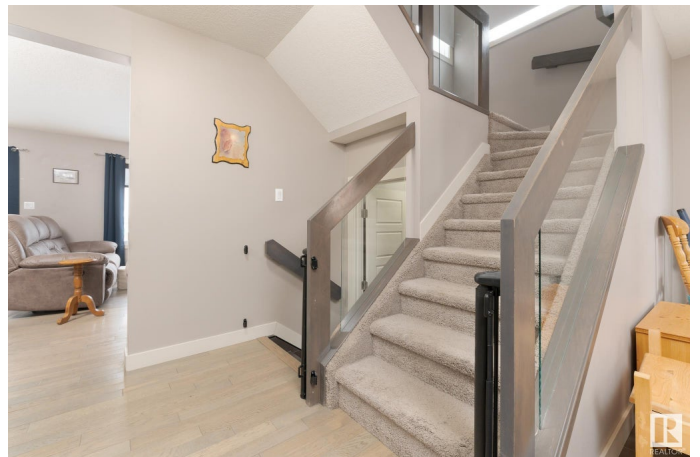
MLS® #E4421936

**\$429,900**

3 Bedroom, 3.50 Bathroom, 1,535 sqft  
Single Family on 0.00 Acres

Willow Park\_STPL, Stony Plain, AB

Discover your dream home in Willow Park! This stunning 1500+ sq ft half duplex is situated in a sought-after cul-de-sac with a desirable pie-shaped yard that's perfect for outdoor entertaining this summer! Boasting numerous upgrades throughout, the main floor offers a functional living space with a cozy gas fireplace and convenient built-in storage for all your needs. The kitchen is a culinary haven with modern appliances, sleek countertops and ample cabinetry. Upstairs, you will find 2 primary bedrooms, each a serene retreat with plenty of natural light and ample closet space. A massive laundry room with its own sink adds to the convenience. The fully finished basement is an entertainer's dream, featuring a wet bar, 3rd bedroom, another living room and abundant storage options. With side entrance access, it offers flexibility and privacy. Central AC to stay cool and the double attached garage is heated. Don't miss out on this gem, secure your new home in this coveted neighborhood before it's too late!



Built in 2012

### Essential Information

MLS® #	E4421936
Price	\$429,900

Bedrooms	3
Bathrooms	3.50
Full Baths	3
Half Baths	1
Square Footage	1,535
Acres	0.00
Year Built	2012
Type	Single Family
Sub-Type	Half Duplex
Style	2 Storey
Status	Active

### **Community Information**

Address	114 Willow's End
Area	Stony Plain
Subdivision	Willow Park_STPL
City	Stony Plain
County	ALBERTA
Province	AB
Postal Code	T7Z 0H7

### **Amenities**

Amenities	Air Conditioner, Deck
Parking	Double Garage Attached, Heated, Insulated

### **Interior**

Interior Features	ensuite bathroom
Appliances	Air Conditioning-Central, Dishwasher-Built-In, Dryer, Freezer, Microwave Hood Fan, Refrigerator, Storage Shed, Stove-Electric, Washer, Window Coverings
Heating	Forced Air-1, Natural Gas
Fireplace	Yes
Fireplaces	Tile Surround
Stories	3
Has Basement	Yes
Basement	Full, Finished

### **Exterior**

Exterior	Wood, Stone, Vinyl
----------	--------------------

Exterior Features	Cul-De-Sac, Fenced, Landscaped, See Remarks
Roof	Asphalt Shingles
Construction	Wood, Stone, Vinyl
Foundation	Concrete Perimeter

### **Additional Information**

Date Listed	February 18th, 2025
Days on Market	22
Zoning	Zone 91

DATA IS DEEMED RELIABLE BUT IS NOT GUARANTEED ACCURATE BY THE REALTORS® ASSOCIATION OF EDMONTON. COPYRIGHT 2025 BY THE REALTORS® ASSOCIATION OF EDMONTON. ALL RIGHTS RESERVED. Trademarks are owned or controlled by the Canadian Real Estate Association (CREA) and identify real estate professionals who are members of CREA (REALTOR®, REALTORS®) and/or the quality of services they provide (MLS®, Multiple Listing Service®)

Listing information last updated on March 12th, 2025 at 2:02pm MDT