

\$532,000 - 3238 Magpie Link, Edmonton

MLS® #E4422079

\$532,000

4 Bedroom, 3.00 Bathroom, 1,750 sqft

Single Family on 0.00 Acres

Starling, Edmonton, AB

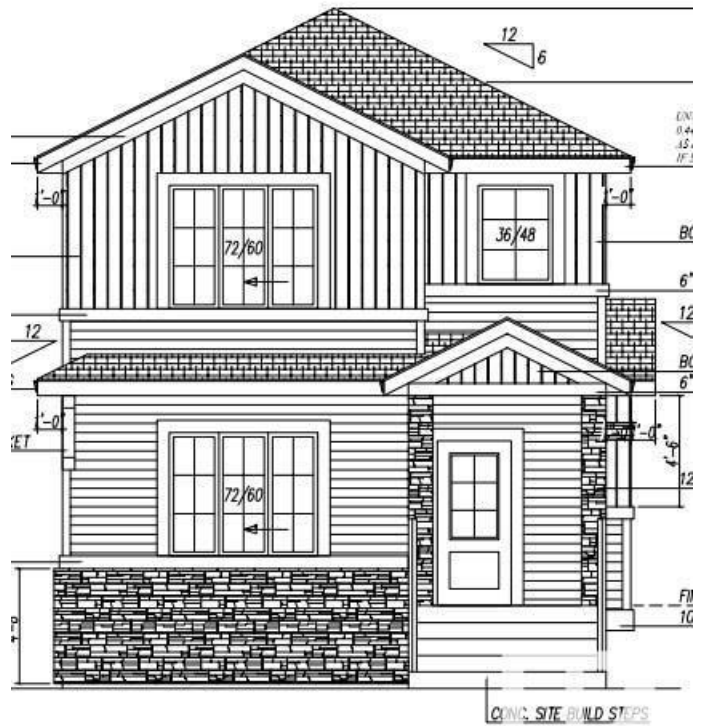
Ready-Move-In! Stunning 1750 sq. ft. single-family detached home in Starling South, Edmonton! This beautifully designed property is built on a corner lot and features a main floor with a full bath, bedroom/den, spacious living room, dining area, and modern kitchen. Upstairs, find a bonus room, 3 bedrooms and 2 full bathrooms, including a luxurious primary suite. private side entrance for potential legal basement suite. Open to above foyer at entrance. The home comes with appliances credit, and garage pad. Quick possession

Built in 2025

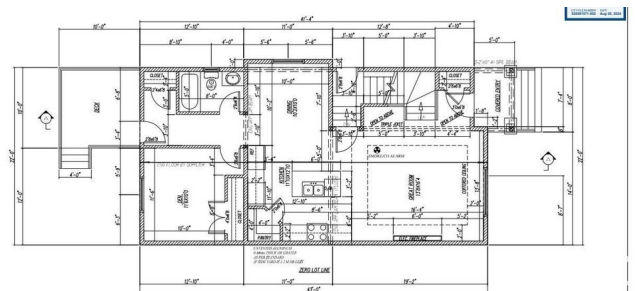
Essential Information

| | |
|----------------|------------------------|
| MLS® # | E4422079 |
| Price | \$532,000 |
| Bedrooms | 4 |
| Bathrooms | 3.00 |
| Full Baths | 3 |
| Square Footage | 1,750 |
| Acres | 0.00 |
| Year Built | 2025 |
| Type | Single Family |
| Sub-Type | Detached Single Family |
| Style | 2 Storey |
| Status | Active |

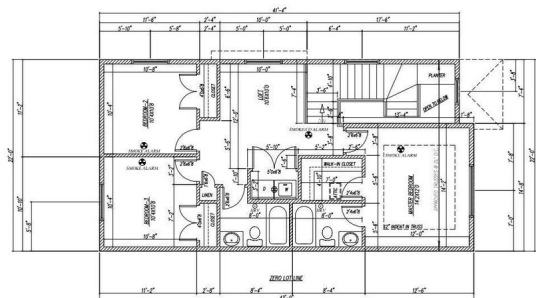
Community Information



FRONT ELEVATION



MAIN FLOOR PLAN 945 sq. ft.



UPPER FLOOR PLAN 805 sq. ft.

| | |
|-------------|------------------|
| Address | 3238 Magpie Link |
| Area | Edmonton |
| Subdivision | Starling |
| City | Edmonton |
| County | ALBERTA |
| Province | AB |
| Postal Code | T5S 0V4 |

Amenities

| | |
|----------------|--|
| Amenities | Ceiling 9 ft., Exterior Walls- 2"x6", 9 ft. Basement Ceiling |
| Parking Spaces | 2 |
| Parking | Parking Pad Cement/Paved |

Interior

| | |
|-------------------|---------------------------|
| Interior Features | ensuite bathroom |
| Appliances | Builder Appliance Credit |
| Heating | Forced Air-1, Natural Gas |
| Fireplace | Yes |
| Fireplaces | Heatilator/Fan |
| Stories | 2 |
| Has Basement | Yes |
| Basement | Full, Unfinished |

Exterior

| | |
|-------------------|--|
| Exterior | Wood, Vinyl |
| Exterior Features | Back Lane, Golf Nearby, Playground Nearby, Ravine View |
| Roof | Asphalt Shingles |
| Construction | Wood, Vinyl |
| Foundation | Concrete Perimeter |

Additional Information

| | |
|----------------|---------------------|
| Date Listed | February 19th, 2025 |
| Days on Market | 50 |
| Zoning | Zone 59 |
| HOA Fees | 100 |
| HOA Fees Freq. | Annually |

DATA IS DEEMED RELIABLE BUT IS NOT GUARANTEED ACCURATE BY THE REALTORS® ASSOCIATION OF EDMONTON. COPYRIGHT 2025 BY THE REALTORS® ASSOCIATION OF EDMONTON. ALL RIGHTS RESERVED. Trademarks are owned or controlled by the Canadian Real Estate Association (CREA) and identify real estate professionals who are members of CREA (REALTOR®, REALTORS®) and/or the quality of services they

provide (MLS® , Multiple Listing Service®)

Listing information last updated on April 10th, 2025 at 9:31pm MDT