

\$320,000 - 36 4821 Terwillegar Common, Edmonton

MLS® #E4422400

\$320,000

2 Bedroom, 2.50 Bathroom, 1,564 sqft
Condo / Townhouse on 0.00 Acres

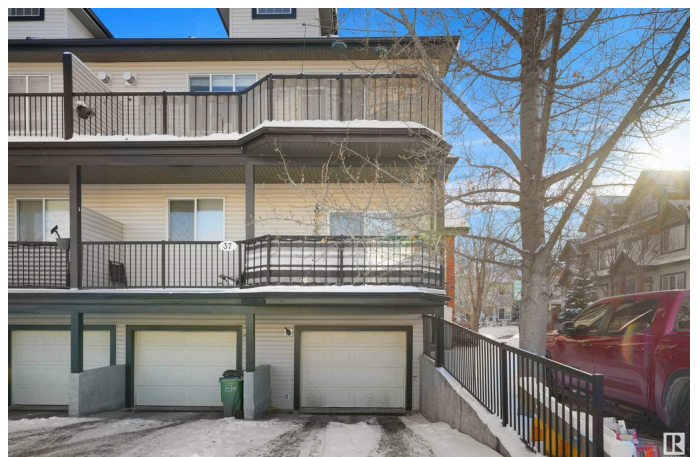
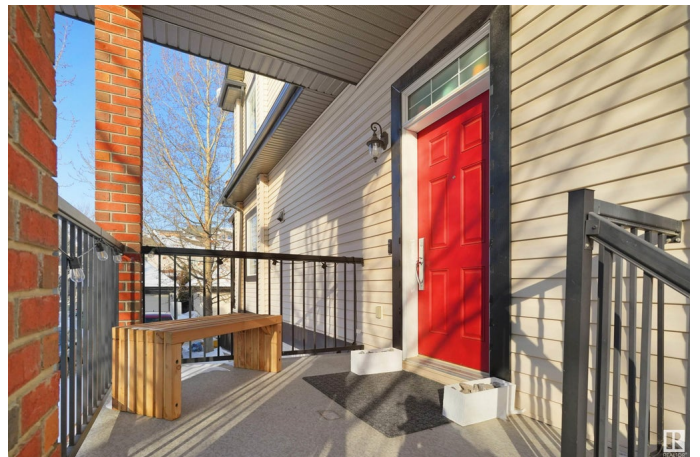
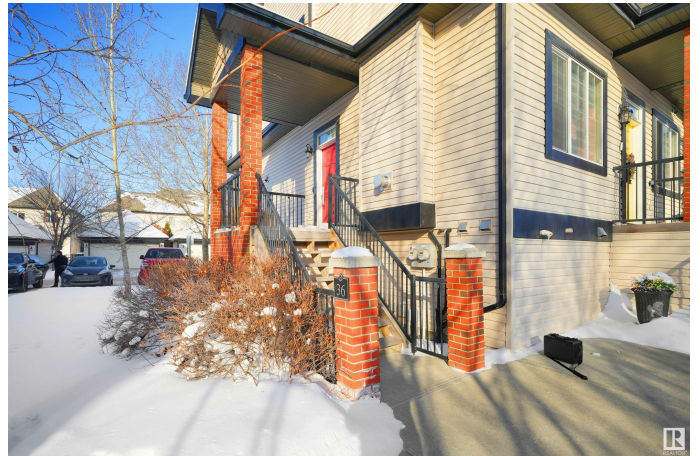
South Terwillegar, Edmonton, AB

Discover this beautiful townhouse located in the desirable neighborhood of Terwillegar. With its open-concept layout and high ceilings on the main floor, this home is flooded with natural light, creating a warm and inviting atmosphere. The chef-inspired kitchen is ideal for both cooking and entertaining, while the spacious dining and living areas provide the perfect setting for gatherings or a peaceful night in. The master suite offers a tranquil escape, featuring generous space, high ceilings, and a private ensuite. Upstairs, the loft is a flexible area that can be used as an office, hobby space, or additional bedroom, complete with a full bath for extra convenience. Also experience convenience and cleanliness at its finest with this home featuring a state-of-the-art built-in vacuum system. The home's prime location offers easy access to the city's top schools and a variety of nearby amenities.

Built in 2006

Essential Information

MLS® #	E4422400
Price	\$320,000
Bedrooms	2
Bathrooms	2.50
Full Baths	2



Half Baths	1
Square Footage	1,564
Acres	0.00
Year Built	2006
Type	Condo / Townhouse
Sub-Type	Townhouse
Style	2 Storey
Status	Active

Community Information

Address	36 4821 Terwillegar Common
Area	Edmonton
Subdivision	South Terwillegar
City	Edmonton
County	ALBERTA
Province	AB
Postal Code	T6R 0C5

Amenities

Amenities	Ceiling 9 ft., Detectors Smoke, No Smoking Home, Parking-Visitor, Patio, Storage-In-Suite, Vaulted Ceiling, Vinyl Windows
Parking	Single Garage Attached

Interior

Interior Features	ensuite bathroom
Appliances	Dishwasher-Built-In, Dryer, Garage Opener, Microwave Hood Fan, Refrigerator, Stove-Electric, Vacuum System Attachments, Washer, Window Coverings
Heating	Forced Air-1, Natural Gas
Stories	3
Has Basement	Yes
Basement	None, No Basement

Exterior

Exterior	Wood, Asphalt, Brick, Vinyl
Exterior Features	Corner Lot, Golf Nearby, Landscaped, Park/Reserve, Picnic Area, Playground Nearby, Public Transportation, Schools, Shopping Nearby
Roof	Asphalt Shingles
Construction	Wood, Asphalt, Brick, Vinyl

Foundation Concrete Perimeter

Additional Information

Date Listed February 21st, 2025

Days on Market 42

Zoning Zone 14

Condo Fee \$719

DATA IS DEEMED RELIABLE BUT IS NOT GUARANTEED ACCURATE BY THE REALTORS® ASSOCIATION OF EDMONTON. COPYRIGHT 2025 BY THE REALTORS® ASSOCIATION OF EDMONTON. ALL RIGHTS RESERVED. Trademarks are owned or controlled by the Canadian Real Estate Association (CREA) and identify real estate professionals who are members of CREA (REALTOR®, REALTORS®) and/or the quality of services they provide (MLS®, Multiple Listing Service®)

Listing information last updated on April 4th, 2025 at 8:02am MDT