

\$448,500 - 203 9708 110 Street, Edmonton

MLS® #E4422850

\$448,500

2 Bedroom, 2.00 Bathroom, 1,115 sqft
Condo / Townhouse on 0.00 Acres

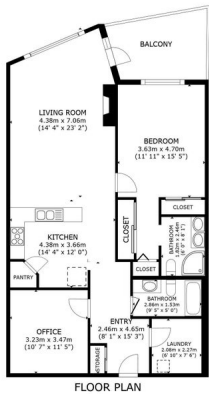
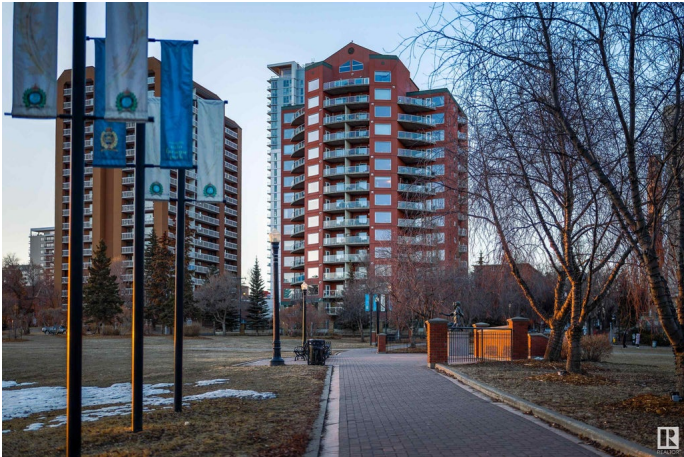
Wîkwêntôwin, Edmonton, AB

RENOVATED, SAFE, SECURE & PRIVATE – THIS 2 BED (1+DEN), 2 BATH HOME IN RIVERVIEW GREEN OFFERS STUNNING HIGH LEVEL BRIDGE & RIVER VALLEY VIEWS, PLUS UNDERGROUND PARKING & STORAGE! Located in the heart of Grandin in Wîkwêntôwin (formerly Oliver), close to Downtown, this pet-friendly, well-managed building offers exceptional convenience and security. Best features include light-filled southern exposure, 9-foot ceilings, breathtaking views, a gas fireplace, electric window coverings with variable shades, and a balcony overlooking the park. Upgrades in the last two years include luxury vinyl flooring, fresh paint, new trim, updated bathrooms, Air Conditioning, all-new appliances and a refreshed kitchen with cabinet refacing & tile backsplash. Premium amenities: gym, lounge, meeting room, workshop, guest suite, heated parking w/car wash, and heated storage. Internet, heat & water included! A perfect option for downsizing or city living-furniture can be included! Move-in ready, don't miss this rare opportunity!

Built in 2000

Essential Information

MLS® # E4422850
Price \$448,500



#203-9708 110 ST
RIVERVIEW GREEN
WIKWENTOWIN, EDMONTON

GROSS INTERNAL AREA
FLOOR PLAN: 103.50 m² (1,115 sq. ft.)
TOTAL: 103.50 m² (1,115 sq. ft.)
SIZES AND DIMENSIONS ARE APPROXIMATE, ACTUAL MAY VARY

| | |
|----------------|------------------------|
| Bedrooms | 2 |
| Bathrooms | 2.00 |
| Full Baths | 2 |
| Square Footage | 1,115 |
| Acres | 0.00 |
| Year Built | 2000 |
| Type | Condo / Townhouse |
| Sub-Type | Apartment High Rise |
| Style | Single Level Apartment |
| Status | Active |

Community Information

| | |
|-------------|---------------------|
| Address | 203 9708 110 Street |
| Area | Edmonton |
| Subdivision | WÃ©hkwÃ©ntÃ©win |
| City | Edmonton |
| County | ALBERTA |
| Province | AB |
| Postal Code | T5K 2W3 |

Amenities

| | |
|----------------|--------------------------------------------------------------------------------------------------------------------------------------------------------------------------------------------------------------------------------------------------------------------------------------------------------------------|
| Amenities | Air Conditioner, Car Wash, Ceiling 9 ft., Closet Organizers, Detectors Smoke, Exercise Room, Guest Suite, Intercom, Parking-Visitor, Party Room, Smart/Program. Thermostat, Secured Parking, Security Door, Sprinkler System-Fire, Storage-In-Suite, Storage-Locker Room, Workshop, HRV System, Rooftop Deck/Patio |
| Parking Spaces | 1 |
| Parking | Heated, Parkade, Stall, Underground |

Interior

| | |
|-------------------|--------------------------------------------------------------------------------------------------------------------------------------------------------------------------------------|
| Interior Features | ensuite bathroom |
| Appliances | Air Conditioning-Central, Dishwasher-Built-In, Dryer, Garage Control, Microwave Hood Fan, Refrigerator, Stove-Electric, Washer, Window Coverings, TV Wall Mount, Curtains and Blinds |
| Heating | Fan Coil, Electric |
| Fireplace | Yes |
| Fireplaces | Mantel |
| # of Stories | 16 |
| Stories | 1 |

| | |
|--------------|-------------------|
| Has Basement | Yes |
| Basement | None, No Basement |

Exterior

| | |
|-------------------|---------------------------------------------------------------------------------------------------------------------------------------------------------------------------------|
| Exterior | Concrete, Stucco, Brick |
| Exterior Features | Back Lane, Fenced, Golf Nearby, Landscaped, Low Maintenance Landscape, Public Transportation, River Valley View, River View, Schools, Shopping Nearby, View City, View Downtown |
| Roof | EPDM Membrane |
| Construction | Concrete, Stucco, Brick |
| Foundation | Concrete Perimeter |

School Information

| | |
|------------|--------------|
| Elementary | W&hkw&nt&win |
| Middle | Westminster |
| High | Victoria |

Additional Information

| | |
|----------------|---------------------|
| Date Listed | February 25th, 2025 |
| Days on Market | 54 |
| Zoning | Zone 12 |
| Condo Fee | \$867 |

DATA IS DEEMED RELIABLE BUT IS NOT GUARANTEED ACCURATE BY THE REALTORS® ASSOCIATION OF EDMONTON. COPYRIGHT 2025 BY THE REALTORS® ASSOCIATION OF EDMONTON. ALL RIGHTS RESERVED. Trademarks are owned or controlled by the Canadian Real Estate Association (CREA) and identify real estate professionals who are members of CREA (REALTOR®, REALTORS®) and/or the quality of services they provide (MLS®, Multiple Listing Service®)

Listing information last updated on April 20th, 2025 at 1:17am MDT