

Courtesy Of David Lam Of Exp Realty

\$575,000 - 48245 Range Rd 212, Rural Camrose County

MLS® #E4423031

\$575,000

3 Bedroom, 2.50 Bathroom, 1,557 sqft

Rural on 29.18 Acres

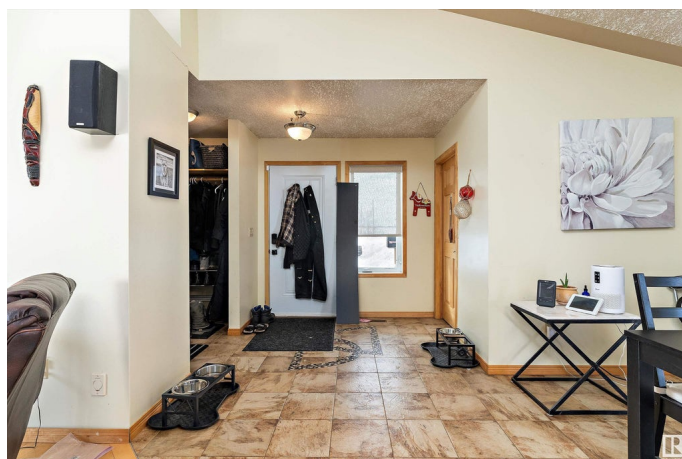
None, Rural Camrose County, AB

Nestled just off pavement on Highway 21, this stunning 29.18-acre property offers the perfect blend of country living and modern convenience. The 1,557 sq. ft. bungalow features an open-concept design with vaulted ceilings, creating a bright and spacious atmosphere. Enjoy three bedrooms, including a primary suite with deck access and an ensuite, plus a cozy family room with a wood pellet stove. The wrap-around deck—partially covered—offers breathtaking countryside views. Additional highlights include a double garage, 16x24 workshop, four versatile outbuildings, a nearly finished smoke shack, a 20' deep dugout, and RV electrical hookups. Well water with an upgraded filtration system ensures quality and savings. With ample space for a barn, large shop, livestock, and crops, this property is perfect for hobby farming or embracing a self-sufficient lifestyle. Endless possibilities await!

Built in 2007

Essential Information

MLS® #	E4423031
Price	\$575,000
Bedrooms	3
Bathrooms	2.50
Full Baths	2



Half Baths	1
Square Footage	1,557
Acres	29.18
Year Built	2007
Type	Rural
Sub-Type	Detached Single Family
Style	Bungalow
Status	Active

Community Information

Address	48245 Range Rd 212
Area	Rural Camrose County
Subdivision	None
City	Rural Camrose County
County	ALBERTA
Province	AB
Postal Code	T0B 0G0

Amenities

Features	Deck
----------	------

Interior

Interior Features	ensuite bathroom
Heating	Forced Air-1, Propane
Fireplace	Yes
Stories	1
Has Basement	Yes
Basement	None, No Basement

Exterior

Exterior	Wood
Exterior Features	Fenced, Schools
Construction	Wood
Foundation	Concrete Perimeter

Additional Information

Date Listed	February 27th, 2025
Days on Market	14
Zoning	Zone 80

DATA IS DEEMED RELIABLE BUT IS NOT GUARANTEED ACCURATE BY THE REALTORS® ASSOCIATION OF EDMONTON. COPYRIGHT 2025 BY THE REALTORS® ASSOCIATION OF EDMONTON. ALL RIGHTS RESERVED. Trademarks are owned or controlled by the Canadian Real Estate Association (CREA) and identify real estate professionals who are members of CREA (REALTOR®, REALTORS®) and/or the quality of services they provide (MLS®, Multiple Listing Service®)

Listing information last updated on March 13th, 2025 at 10:02am MDT