

Courtesy Of Jeff D Jackson Of Bode

\$519,900 - 310 Juniper Cove, Leduc

MLS® #E4423159

\$519,900

4 Bedroom, 3.00 Bathroom, 1,873 sqft
Single Family on 0.00 Acres

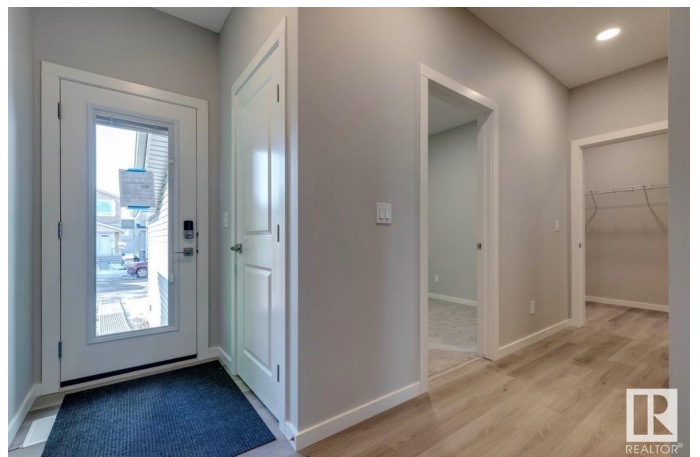
Woodbend, Leduc, AB

Welcome to the Stella Model by Bedrock Homes, a stunning blend of functionality & modern design. This spacious home offers 4 bedrooms & 3 bathrooms, featuring a main floor bedroom with a full bath—perfect for guests, a home office, or a flex space. The heart of the home boasts a great room with an electric fireplace, adjacent to a chef-inspired kitchen equipped with Samsung 4-piece stainless steel appliances, a walk-through pantry, & elegant finishes. Soaring 9' ceilings on the main floor & foundation walls enhance the sense of space, while the central upstairs bonus room provides a versatile area for relaxation or entertainment. The luxurious ensuite features dual sinks & a full shower, complemented by stylish paint-grade metal spindle railings throughout. Additional highlights include a separate side entrance for future basement development, a Smart Home package for modern convenience, & an 18' x 22' double front attached garage—making this home the perfect fusion of comfort & style.

Built in 2024

Essential Information

MLS® #	E4423159
Price	\$519,900
Bedrooms	4



Bathrooms	3.00
Full Baths	3
Square Footage	1,873
Acres	0.00
Year Built	2024
Type	Single Family
Sub-Type	Detached Single Family
Style	2 Storey
Status	Active

Community Information

Address	310 Juniper Cove
Area	Leduc
Subdivision	Woodbend
City	Leduc
County	ALBERTA
Province	AB
Postal Code	T9E 1S7

Amenities

Amenities	No Animal Home, No Smoking Home
Parking Spaces	4
Parking	Double Garage Attached

Interior

Interior Features	ensuite bathroom
Appliances	Dishwasher-Built-In, Oven-Microwave, Refrigerator, Stove-Electric
Heating	Forced Air-1, Natural Gas
Fireplace	Yes
Fireplaces	Insert
Stories	2
Has Basement	Yes
Basement	Full, Unfinished

Exterior

Exterior	Wood, Stone, Vinyl
Exterior Features	Landscaped, Park/Reserve, Playground Nearby, Shopping Nearby
Roof	Asphalt Shingles
Construction	Wood, Stone, Vinyl

Foundation Concrete Perimeter

Additional Information

Date Listed February 27th, 2025

Days on Market 13

Zoning Zone 81

DATA IS DEEMED RELIABLE BUT IS NOT GUARANTEED ACCURATE BY THE REALTORS® ASSOCIATION OF EDMONTON. COPYRIGHT 2025 BY THE REALTORS® ASSOCIATION OF EDMONTON. ALL RIGHTS RESERVED. Trademarks are owned or controlled by the Canadian Real Estate Association (CREA) and identify real estate professionals who are members of CREA (REALTOR®, REALTORS®) and/or the quality of services they provide (MLS®, Multiple Listing Service®)

Listing information last updated on March 12th, 2025 at 6:47pm MDT