

\$425,000 - 98 South Creek Wynd, Stony Plain

MLS® #E4423208

\$425,000

4 Bedroom, 3.50 Bathroom, 1,659 sqft

Single Family on 0.00 Acres

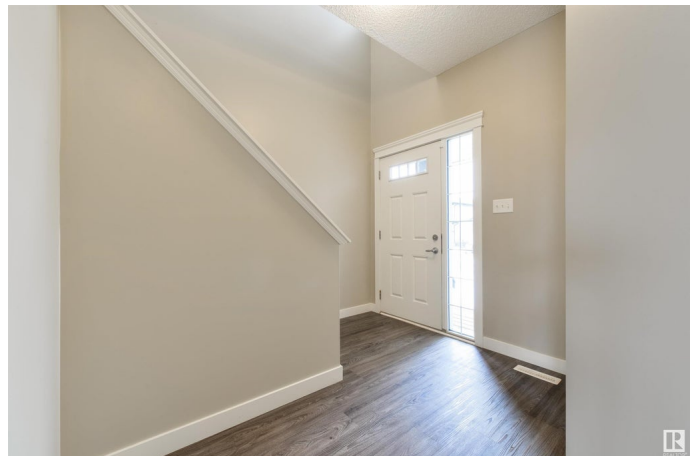
South Creek, Stony Plain, AB

NO REAR NEIGHBOURS with a desirable WEST-FACING view! Freshly painted, this half duplex in South Creek is one of the largest in the area and features vinyl plank flooring, a spacious kitchen with warm-toned cabinetry, center island, GRANITE countertops, separate dinette, & a WALK-THROUGH pantry leading to the mudroom area & double-attached garage, 4 generous-sized bedrooms including a stunning owner's suite with French doors, vaulted ceilings, walk-in closet, and 4pc ensuite, top-floor laundry, and a fully-finished basement. Outside you'll find the yard is fully landscaped & fenced with an exterior deck and an unobstructed view – perfect for watching those evening sunsets! Within walking distance to the trails, playgrounds, and the Stony Plain Golf Course, the location here is fantastic!!

Built in 2017

Essential Information

MLS® #	E4423208
Price	\$425,000
Bedrooms	4
Bathrooms	3.50
Full Baths	3
Half Baths	1
Square Footage	1,659



Acres	0.00
Year Built	2017
Type	Single Family
Sub-Type	Half Duplex
Style	2 Storey
Status	Active

Community Information

Address	98 South Creek Wynd
Area	Stony Plain
Subdivision	South Creek
City	Stony Plain
County	ALBERTA
Province	AB
Postal Code	T7Z 0J9

Amenities

Amenities	Deck, No Smoking Home, See Remarks
Parking	Double Garage Attached

Interior

Interior Features	ensuite bathroom
Appliances	Dishwasher-Built-In, Dryer, Garage Control, Garage Opener, Hood Fan, Refrigerator, Stove-Electric, Washer, Window Coverings
Heating	Forced Air-1, Natural Gas
Stories	3
Has Basement	Yes
Basement	Full, Finished

Exterior

Exterior	Wood, Stone, Vinyl
Exterior Features	Backs Onto Park/Trees, Fenced, Flat Site, Golf Nearby, Landscaped, Playground Nearby, Schools, Shopping Nearby, See Remarks
Roof	Asphalt Shingles
Construction	Wood, Stone, Vinyl
Foundation	Concrete Perimeter

Additional Information

Date Listed	February 27th, 2025
-------------	---------------------

Days on Market 13

Zoning Zone 91

DATA IS DEEMED RELIABLE BUT IS NOT GUARANTEED ACCURATE BY THE REALTORS® ASSOCIATION OF EDMONTON. COPYRIGHT 2025 BY THE REALTORS® ASSOCIATION OF EDMONTON. ALL RIGHTS RESERVED. Trademarks are owned or controlled by the Canadian Real Estate Association (CREA) and identify real estate professionals who are members of CREA (REALTOR®, REALTORS®) and/or the quality of services they provide (MLS®, Multiple Listing Service®)

Listing information last updated on March 12th, 2025 at 2:47pm MDT