

Courtesy Of Morgan L Lindmark Of Century 21 Leading

\$119,900 - Sw-6-51-27-4, Rural Parkland County

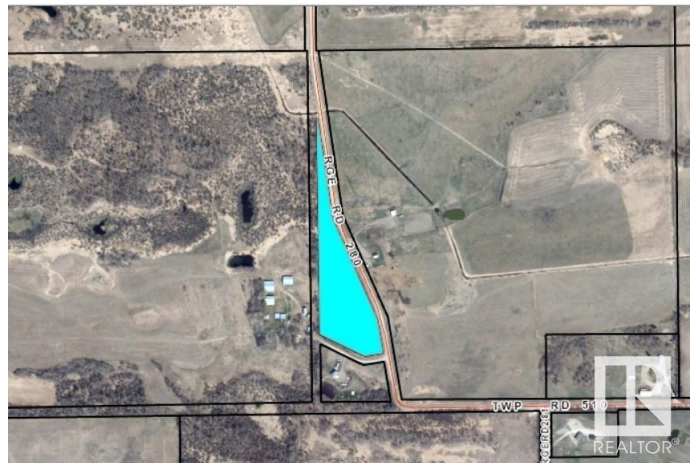
MLS® #E4423501

\$119,900

0 Bedroom, 0.00 Bathroom,
Rural on 7.30 Acres

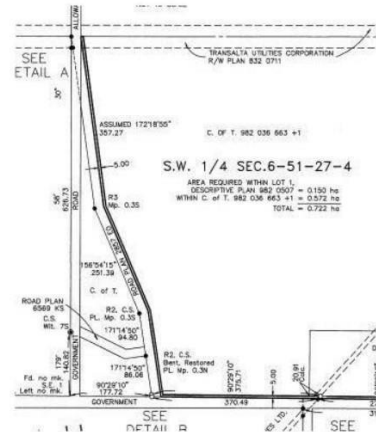
None, Rural Parkland County, AB

Over 7 acres out of subdivision Acreage. Lots
of trees on the property.



Essential Information

MLS® #	E4423501
Price	\$119,900
Bathrooms	0.00
Acres	7.30
Type	Rural
Sub-Type	Vacant Lot/Land
Status	Active



Community Information

Address	Sw-6-51-27-4
Area	Rural Parkland County
Subdivision	None
City	Rural Parkland County
County	ALBERTA
Province	AB
Postal Code	T7Y 1G6



Exterior

Exterior Features Treed Lot

Additional Information

Date Listed	February 28th, 2025
Days on Market	14

Zoning

Zone 90

DATA IS DEEMED RELIABLE BUT IS NOT GUARANTEED ACCURATE BY THE REALTORS® ASSOCIATION OF EDMONTON. COPYRIGHT 2025 BY THE REALTORS® ASSOCIATION OF EDMONTON. ALL RIGHTS RESERVED. Trademarks are owned or controlled by the Canadian Real Estate Association (CREA) and identify real estate professionals who are members of CREA (REALTOR®, REALTORS®) and/or the quality of services they provide (MLS®, Multiple Listing Service®)

Listing information last updated on March 14th, 2025 at 12:02am MDT