

\$359,900 - 305 69 Crystal Lane, Sherwood Park

MLS® #E4424191

\$359,900

2 Bedroom, 2.00 Bathroom, 1,203 sqft
Condo / Townhouse on 0.00 Acres

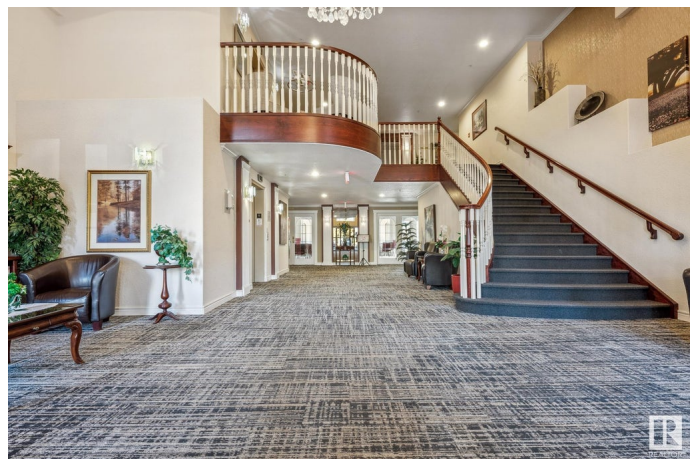
Durham Town Square, Sherwood Park, AB

Experience luxurious 55+ living in Sherwood Park! This spacious and bright CORNER UNIT condo offers morning sun and a beautiful view of the community garden and neighbouring playground, as well as an unparalleled amenity-rich lifestyle. Imagine a vibrant community with a full schedule of social events, a massive social room with a full kitchen (think monthly \$5 lunches!), a well-equipped exercise room, two libraries, a card & craft room, a woodworking workshop, a convenient car wash, & two guest suites for visiting family. The unit itself has been well maintained and has updated laminate flooring throughout the main living spaces. The playground right behind the building & a thriving community garden, are perfect for visiting grandkids & enjoying the outdoors. This isn't just a condo; it's a lifestyle!

Built in 2000

Essential Information

MLS® #	E4424191
Price	\$359,900
Bedrooms	2
Bathrooms	2.00
Full Baths	2
Square Footage	1,203
Acres	0.00



Year Built	2000
Type	Condo / Townhouse
Sub-Type	Lowrise Apartment
Style	Single Level Apartment
Status	Active

Community Information

Address	305 69 Crystal Lane
Area	Sherwood Park
Subdivision	Durham Town Square
City	Sherwood Park
County	ALBERTA
Province	AB
Postal Code	T8H 2E9

Amenities

Amenities	Car Wash, Deck, Exercise Room, Guest Suite, No Smoking Home, Parking-Visitor, Party Room, Recreation Room/Centre, Secured Parking, Social Rooms, Vinyl Windows, Workshop, Storage Cage
Parking	Heated, Underground

Interior

Interior Features	ensuite bathroom
Appliances	Dishwasher-Built-In, Dryer, Hood Fan, Oven-Microwave, Refrigerator, Stove-Electric, Washer, Window Coverings
Heating	In Floor Heat System, Natural Gas
# of Stories	4
Stories	1
Has Basement	Yes
Basement	None, No Basement

Exterior

Exterior	Wood, Stucco
Exterior Features	Backs Onto Park/Trees, Playground Nearby, Public Transportation, Shopping Nearby, See Remarks
Roof	Asphalt Shingles
Construction	Wood, Stucco
Foundation	Concrete Perimeter

Additional Information

Date Listed	March 6th, 2025
Days on Market	7
Zoning	Zone 25
Condo Fee	\$639

DATA IS DEEMED RELIABLE BUT IS NOT GUARANTEED ACCURATE BY THE REALTORS® ASSOCIATION OF EDMONTON. COPYRIGHT 2025 BY THE REALTORS® ASSOCIATION OF EDMONTON. ALL RIGHTS RESERVED. Trademarks are owned or controlled by the Canadian Real Estate Association (CREA) and identify real estate professionals who are members of CREA (REALTOR®, REALTORS®) and/or the quality of services they provide (MLS®, Multiple Listing Service®)

Listing information last updated on March 13th, 2025 at 7:17pm MDT