

Courtesy Of Danelle L Bolinski Of NOW Real Estate Group

## **\$259,900 - 17020 103 Street, Edmonton**

MLS® #E4424916

**\$259,900**

4 Bedroom, 2.00 Bathroom, 1,026 sqft  
Condo / Townhouse on 0.00 Acres

Baturyn, Edmonton, AB

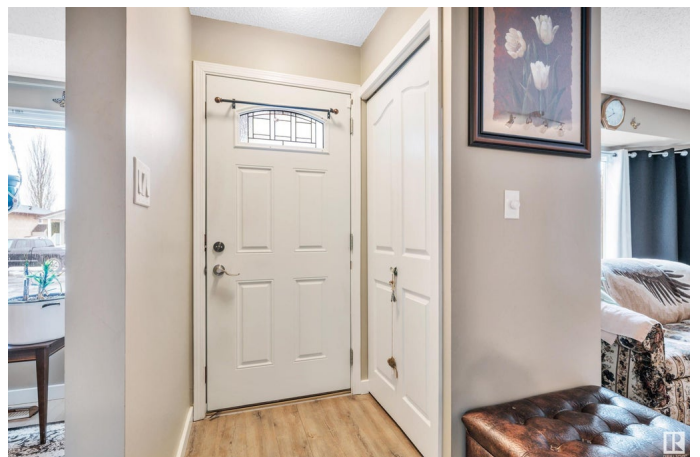
Beautifully Updated Home in Baturyn! This move-in-ready gem boasts modern updates and thoughtful upgrades. The exterior shines with new siding, an updated driveway, sidewalk, and front porch. Inside, the refreshed kitchen offers new cabinets, a stylish backsplash, sleek countertops, and a new sink. The main floor features 3 bedrooms, including a spacious primary suite with a walk-in closet, plus an updated 4-piece bathroom with a new vanity and tiled tub surround! Downstairs, enjoy a retro cozy rec area with a wet bar, a 4th bedroom, a second 4-piece bath, and a large laundry room with a sink and extra refrigerator. Stay comfortable year-round with central A/C! This home is steps from 4 playgrounds, a dog park, 3 skating rinks, a basketball court, 9 ball diamonds, 17 sports fields, and 3 community centers. Plus, enjoy easy access to nearby trails, schools, and shopping. Great location being a 2-minute walk to transit & a hop, skip & jump away from Henday for an easy commute no matter where you're going!

Built in 1980

### **Essential Information**

MLS® # E4424916

Price \$259,900



Bedrooms	4
Bathrooms	2.00
Full Baths	2
Square Footage	1,026
Acres	0.00
Year Built	1980
Type	Condo / Townhouse
Sub-Type	Half Duplex
Style	Bungalow
Status	Active

### **Community Information**

Address	17020 103 Street
Area	Edmonton
Subdivision	Baturyn
City	Edmonton
County	ALBERTA
Province	AB
Postal Code	T5X 4Z4

### **Amenities**

Amenities	On Street Parking
Parking	Single Carport

### **Interior**

Appliances	Air Conditioning-Central, Dryer, Hood Fan, Storage Shed, Stove-Electric, Washer, Window Coverings, Refrigerators-Two
Heating	Forced Air-1, Natural Gas
Stories	2
Has Basement	Yes
Basement	Full, Finished

### **Exterior**

Exterior	Wood, Vinyl
Exterior Features	Fenced, Public Transportation, Schools, Shopping Nearby
Roof	Asphalt Shingles
Construction	Wood, Vinyl
Foundation	Concrete Perimeter

### **School Information**

Elementary	Baturyn School
Middle	Mary Butterworth School
High	Queen Elizabeth School

### **Additional Information**

Date Listed	March 10th, 2025
Days on Market	2
Zoning	Zone 27
Condo Fee	\$364

DATA IS DEEMED RELIABLE BUT IS NOT GUARANTEED ACCURATE BY THE REALTORS® ASSOCIATION OF EDMONTON. COPYRIGHT 2025 BY THE REALTORS® ASSOCIATION OF EDMONTON. ALL RIGHTS RESERVED. Trademarks are owned or controlled by the Canadian Real Estate Association (CREA) and identify real estate professionals who are members of CREA (REALTOR®, REALTORS®) and/or the quality of services they provide (MLS®, Multiple Listing Service®)

Listing information last updated on March 12th, 2025 at 2:17pm MDT