

\$534,995 - 2008 155 Avenue, Edmonton

MLS® #E4425116

\$534,995

3 Bedroom, 2.50 Bathroom, 1,899 sqft
Single Family on 0.00 Acres

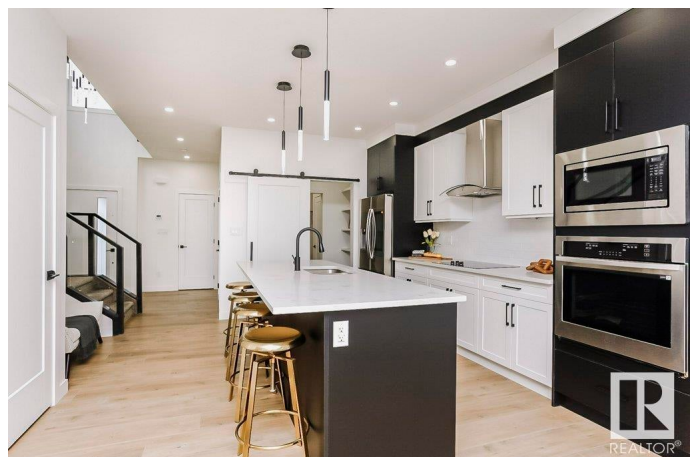
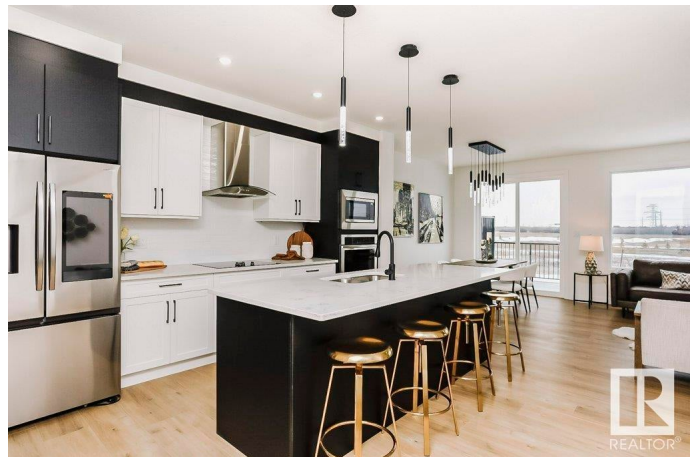
Gorman, Edmonton, AB

Brand NEW and GORGEOUS in Gorman! At nearly 1900 sq ft this 3 Bed/2.5 Bath home combines Style and Function. Welcoming you is a spacious open-to-above foyer and leads to the modern Kitchen- Two tone Cabinets, Quartz Countertops, Upgraded Appliances & Walkthrough Pantry. The open-concept living and dining area is bright and inviting, with a STUNNING fireplace feature wall, sliding doors to your yard and natural light galore. A mudroom and tucked away 2pc bath completes the main floor. The second level spares no details - An additional Living Space or Office, 2 Spacious Secondary Bedrooms, 4 pc guest bath & Laundry. Plus-a Primary Suite to RAVE about - Tray Ceiling, Accent Wall, Expansive Walk-in closet w built ins and a 5-piece ensuite featuring a free standing soaker tub & an oversized glass shower. Additional highlights include a side entry to the basement (Legal Suite potential) Double Garage, Deck and AMAZING Access to Arterial routes & Amenities (Just 6 mins away). Your new home is move in ready!

Built in 2025

Essential Information

MLS® #	E4425116
Price	\$534,995



Bedrooms	3
Bathrooms	2.50
Full Baths	2
Half Baths	1
Square Footage	1,899
Acres	0.00
Year Built	2025
Type	Single Family
Sub-Type	Half Duplex
Style	2 Storey
Status	Active

Community Information

Address	2008 155 Avenue
Area	Edmonton
Subdivision	Gorman
City	Edmonton
County	ALBERTA
Province	AB
Postal Code	T5Y 4H8

Amenities

Amenities	Ceiling 9 ft., Closet Organizers, Deck, No Animal Home, No Smoking Home, Natural Gas BBQ Hookup, 9 ft. Basement Ceiling
Parking	Double Garage Attached

Interior

Interior Features	ensuite bathroom
Appliances	Dishwasher-Built-In, Dryer, Garage Control, Garage Opener, Oven-Built-In, Oven-Microwave, Refrigerator, Stove-Countertop Electric, Washer
Heating	Forced Air-1, Natural Gas
Fireplace	Yes
Fireplaces	See Remarks
Stories	2
Has Basement	Yes
Basement	Full, See Remarks

Exterior

Exterior	Wood, Stone, Vinyl
Exterior Features	Park/Reserve, Shopping Nearby, See Remarks
Roof	Asphalt Shingles
Construction	Wood, Stone, Vinyl
Foundation	Concrete Perimeter

School Information

Elementary	St. Bonaventure/ Kirkness
Middle	J. J. Bowlen/John D. Bracc
High	Oâ€™Leary/ME Lazerte

Additional Information

Date Listed	March 11th, 2025
Days on Market	1
Zoning	Zone 03

DATA IS DEEMED RELIABLE BUT IS NOT GUARANTEED ACCURATE BY THE REALTORS® ASSOCIATION OF EDMONTON. COPYRIGHT 2025 BY THE REALTORS® ASSOCIATION OF EDMONTON. ALL RIGHTS RESERVED. Trademarks are owned or controlled by the Canadian Real Estate Association (CREA) and identify real estate professionals who are members of CREA (REALTOR®, REALTORS®) and/or the quality of services they provide (MLS®, Multiple Listing Service®)

Listing information last updated on March 12th, 2025 at 2:32pm MDT