

\$559,000 - 3012 25ave Nw, Edmonton

MLS® #E4425126

\$559,000

4 Bedroom, 3.50 Bathroom, 2,116 sqft

Single Family on 0.00 Acres

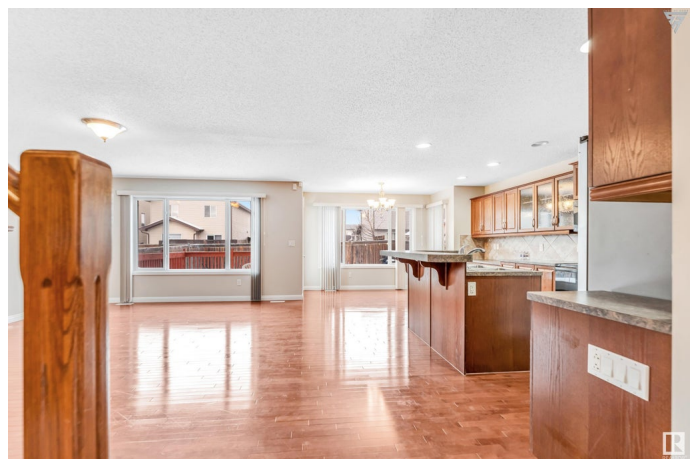
Silver Berry, Edmonton, AB

Immaculate and well maintained home in highly desired neighborhood of Silver Berry , this beautiful home offers a serene and private retreat with its meticulously landscaped backyard. Main floor is bathed in natural light and features a well-appointed spacious kitchen with almost new appliances (refrigerator, stove and dryer bought couple years back) Upstairs, youâ€™ll find a cozy bonus room, immaculate bathrooms, and generously sized 4 bedrooms, including a luxurious primary suite with a relaxing ensuite. The basement offers a large entertainment area and an additional full bathroom. The deck provides ample space for outdoor relaxation .Recent updates include a NEW ROOF, HOT WATER TANK & FRESH PAINT throughout. Located With easy access to the Henday and close proximity to NEW HIGH SCHOOL, REC Centre, parks, other schools. This home showcases true pride of ownership and is move-in ready for its new owners to enjoy.

Built in 2007

Essential Information

MLS® #	E4425126
Price	\$559,000
Bedrooms	4
Bathrooms	3.50



Full Baths	3
Half Baths	1
Square Footage	2,116
Acres	0.00
Year Built	2007
Type	Single Family
Sub-Type	Detached Single Family
Style	2 Storey
Status	Active

Community Information

Address	3012 25ave Nw
Area	Edmonton
Subdivision	Silver Berry
City	Edmonton
County	ALBERTA
Province	AB
Postal Code	T6T 0C8

Amenities

Amenities	Ceiling 9 ft., Deck, No Animal Home, No Smoking Home
Parking	Double Garage Attached

Interior

Interior Features	ensuite bathroom
Appliances	Dishwasher-Built-In, Dryer, Refrigerator, Stove-Electric, Window Coverings
Heating	Forced Air-1, Natural Gas
Stories	3
Has Basement	Yes
Basement	Full, Finished

Exterior

Exterior	Wood, Vinyl
Exterior Features	Fenced, Landscaped, Playground Nearby, Public Transportation, Recreation Use, Schools, Shopping Nearby
Roof	Asphalt Shingles
Construction	Wood, Vinyl
Foundation	Concrete Perimeter

Additional Information

Date Listed	March 11th, 2025
Days on Market	39
Zoning	Zone 30

DATA IS DEEMED RELIABLE BUT IS NOT GUARANTEED ACCURATE BY THE REALTORS® ASSOCIATION OF EDMONTON. COPYRIGHT 2025 BY THE REALTORS® ASSOCIATION OF EDMONTON. ALL RIGHTS RESERVED.Trademarks are owned or controlled by the Canadian Real Estate Association (CREA) and identify real estate professionals who are members of CREA (REALTOR®, REALTORS®) and/or the quality of services they provide (MLS®, Multiple Listing Service®)

Listing information last updated on April 19th, 2025 at 3:17pm MDT