

\$625,000 - 82 Hemingway Crescent, Spruce Grove

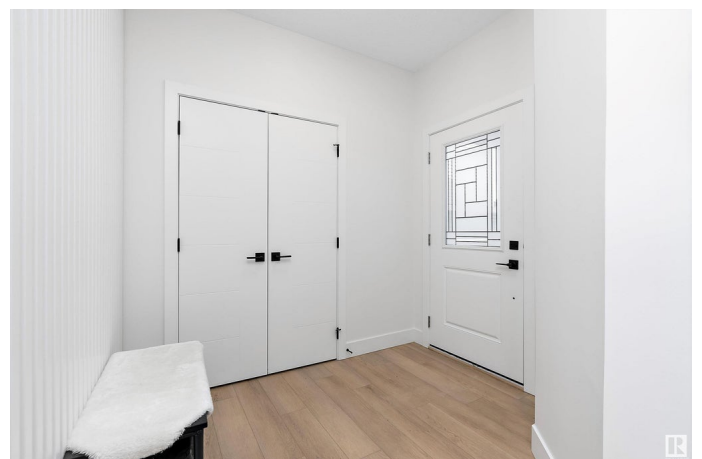
MLS® #E4425215

\$625,000

3 Bedroom, 2.50 Bathroom, 2,314 sqft
Single Family on 0.00 Acres

Harvest Ridge, Spruce Grove, AB

Welcome to this 2314 sqft home with a south-facing backyard overlooking lush greenspace & walking trail. Inside you are greeted by an open-concept layout, where soaring ceilings & a breathtaking open-to-above great room create a sense of grandeur. The 9'™ ceilings extend throughout the main floor & basement, enhancing the airy ambiance. Luxury vinyl plank flooring flows through the main level, leading to a spacious den & a chef's™ dream kitchen. Here, you'll find quartz countertops, sleek modern cabinetry, a huge island & a convenient walk-through pantry that connects seamlessly to the mudroom. The second level unveils a large bonus room with tray ceilings, a laundry room & 3 spacious bedrooms. The primary suite is a true retreat, featuring a spa-inspired ensuite with a tiled shower, a free-standing soaking tub, & double sinks. A perfect blend of modern sophistication and everyday comfort with easy access to schools & shopping, this home is waiting to welcome you! *Some photos have been virtually staged*



Built in 2024

Essential Information

MLS® #	E4425215
Price	\$625,000

Bedrooms	3
Bathrooms	2.50
Full Baths	2
Half Baths	1
Square Footage	2,314
Acres	0.00
Year Built	2024
Type	Single Family
Sub-Type	Detached Single Family
Style	2 Storey
Status	Active

Community Information

Address	82 Hemingway Crescent
Area	Spruce Grove
Subdivision	Harvest Ridge
City	Spruce Grove
County	ALBERTA
Province	AB
Postal Code	T7X 2L6

Amenities

Amenities	Ceiling 9 ft., Hot Water Tankless, No Animal Home, No Smoking Home, Smart/Program. Thermostat, Natural Gas BBQ Hookup, 9 ft. Basement Ceiling
Parking Spaces	4
Parking	Double Garage Attached

Interior

Interior Features	ensuite bathroom
Appliances	Dishwasher-Built-In, Dryer, Garage Control, Garage Opener, Hood Fan, Oven-Built-In, Oven-Microwave, Refrigerator, Stove-Electric, Washer
Heating	Forced Air-1, Natural Gas
Fireplace	Yes
Fireplaces	Mantel
Stories	2
Has Basement	Yes
Basement	Full, Unfinished

Exterior

Exterior	Wood, Vinyl
Exterior Features	Backs Onto Park/Trees, Golf Nearby, No Back Lane, Playground Nearby, Schools, Shopping Nearby
Roof	Asphalt Shingles
Construction	Wood, Vinyl
Foundation	Concrete Perimeter

School Information

Elementary	Copperhaven School
Middle	Copperhaven School
High	Spruce Grove Composite

Additional Information

Date Listed	March 12th, 2025
Days on Market	2
Zoning	Zone 91

DATA IS DEEMED RELIABLE BUT IS NOT GUARANTEED ACCURATE BY THE REALTORS® ASSOCIATION OF EDMONTON. COPYRIGHT 2025 BY THE REALTORS® ASSOCIATION OF EDMONTON. ALL RIGHTS RESERVED. Trademarks are owned or controlled by the Canadian Real Estate Association (CREA) and identify real estate professionals who are members of CREA (REALTOR®, REALTORS®) and/or the quality of services they provide (MLS®, Multiple Listing Service®)

Listing information last updated on March 13th, 2025 at 9:02pm MDT