

\$365,000 - 209 11660 79 Avenue, Edmonton

MLS® #E4425404

\$365,000

2 Bedroom, 2.00 Bathroom, 1,117 sqft
Condo / Townhouse on 0.00 Acres

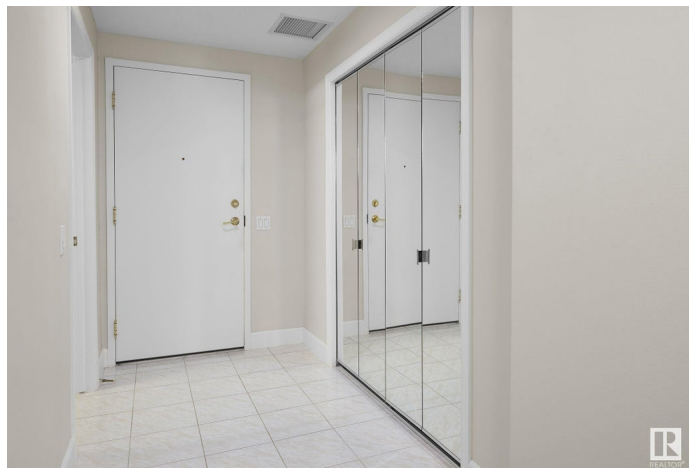
Belgravia, Edmonton, AB

Welcome to the historic community of Belgravia with tree lined boulevards & cafes. An adults only building perfect for UofA professionals, parents of students looking to invest in a condo for their post secondary children returning to UofA or snowbirds looking for a place to stay while summering in Edmonton. Enjoy easy access to the River Valley, the UofA hospital, Cross Cancer Clinic & the popular Whyte Avenue restaurant & shopping areas! This beautiful condo located in the heart of Belgravia is just over 1117sqft of living space â€“ 2 bedrooms, 2 bathrooms, laundry room, in suite storage, spacious living room with gas fire place, underground heated parking & more. The perfect location for every buyer & this condo has had many upgrades throughout the years!

Built in 1992

Essential Information

MLS® #	E4425404
Price	\$365,000
Bedrooms	2
Bathrooms	2.00
Full Baths	2
Square Footage	1,117
Acres	0.00
Year Built	1992



Type	Condo / Townhouse
Sub-Type	Lowrise Apartment
Style	Single Level Apartment
Status	Active

Community Information

Address	209 11660 79 Avenue
Area	Edmonton
Subdivision	Belgravia
City	Edmonton
County	ALBERTA
Province	AB
Postal Code	T6G 0P7

Amenities

Amenities	Air Conditioner, Detectors Smoke, No Animal Home, No Smoking Home, Parking-Visitor, Secured Parking, Security Door, Vinyl Windows
Parking Spaces	1
Parking	Heated, Underground

Interior

Interior Features	ensuite bathroom
Appliances	Air Conditioning-Central, Dishwasher-Built-In, Dryer, Hood Fan, Oven-Built-In, Oven-Microwave, Refrigerator, Stove-Countertop Electric, Washer, Window Coverings
Heating	In Floor Heat System, Natural Gas
Fireplace	Yes
Fireplaces	Glass Door
# of Stories	3
Stories	1
Has Basement	Yes
Basement	None, No Basement

Exterior

Exterior	Wood, Stucco
Exterior Features	Landscaped, Low Maintenance Landscape, Park/Reserve, Public Transportation, Schools, Shopping Nearby, Treed Lot
Roof	Asphalt Shingles
Construction	Wood, Stucco

Foundation Concrete Perimeter

School Information

Elementary McKernan School
Middle McKernan School
High Strathcona School

Additional Information

Date Listed March 13th, 2025
Days on Market 1
Zoning Zone 15
Condo Fee \$705

DATA IS DEEMED RELIABLE BUT IS NOT GUARANTEED ACCURATE BY THE REALTORS® ASSOCIATION OF EDMONTON. COPYRIGHT 2025 BY THE REALTORS® ASSOCIATION OF EDMONTON. ALL RIGHTS RESERVED. Trademarks are owned or controlled by the Canadian Real Estate Association (CREA) and identify real estate professionals who are members of CREA (REALTOR®, REALTORS®) and/or the quality of services they provide (MLS®, Multiple Listing Service®)

Listing information last updated on March 14th, 2025 at 7:17am MDT