

\$849,900 - 242 52009 Rge Road 214, Rural Strathcona County

MLS® #E4425465

\$849,900

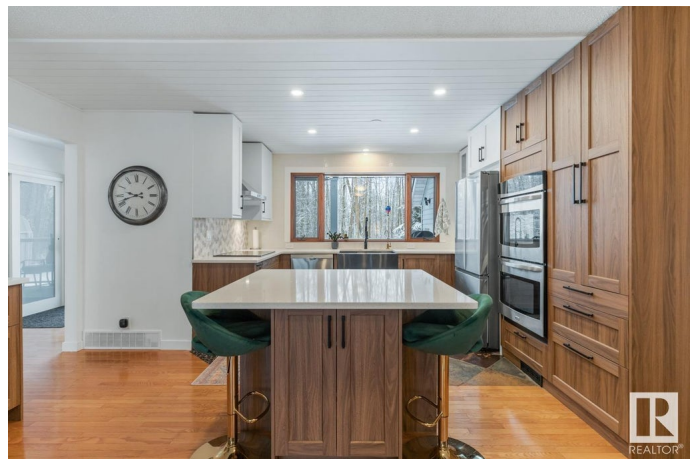
5 Bedroom, 3.50 Bathroom, 2,970 sqft
Rural on 3.26 Acres

Wildwood Village, Rural Strathcona County,
AB

Welcome to a private oasis in Wildwood Village 12mins from Sherwood Park, where you will find this beautifully updated family home featuring 5 bdrms & 3.5 baths. Stunning private entry gate & Covered front verandah invites you in to find a spacious entry, where gleaming hardwood floors take you in to the BRAND NEW kitchen that offers plenty of cabinets, S/S appliances with induction stove top, cute coffee bar & quartz island that overlooks the living rm with fireplace. NEW vinyl plank throughout the family & dining rm with cozy 3-sided fireplace. Complementing the layout is laundry, 1/2 bath & mud rm with in floor heat. Upstairs, the vinyl plank is carried throughout the massive, king sized primary with 3 closets & 5pc ensuite, soaker tub & WI shower. 2 more huge bdrms & 4pc bath with claw foot tub complete the upstairs. The basement features a KITCHENETTE, rec room, 2 bdrms, 4pc bath & tons of storage. 3 season room, dbl att garage with in floor heat & lofted workshop, plus walking trails on 3.26 acres.

Built in 1987

Essential Information



MLS® #	E4425465
Price	\$849,900
Bedrooms	5
Bathrooms	3.50
Full Baths	3
Half Baths	1
Square Footage	2,970
Acres	3.26
Year Built	1987
Type	Rural
Sub-Type	Detached Single Family
Style	2 Storey
Status	Active

Community Information

Address	242 52009 Rge Road 214
Area	Rural Strathcona County
Subdivision	Wildwood Village
City	Rural Strathcona County
County	ALBERTA
Province	AB
Postal Code	T8E 1A2

Amenities

Features	Deck, See Remarks
----------	-------------------

Interior

Interior Features	ensuite bathroom
Heating	Forced Air-2, In Floor Heat System, Natural Gas
Fireplace	Yes
Stories	3
Has Basement	Yes
Basement	Full, Finished

Exterior

Exterior	Wood
Exterior Features	Landscaped, Private Setting, See Remarks
Construction	Wood
Foundation	Concrete Perimeter

Additional Information

Date Listed March 13th, 2025

Days on Market 22

Zoning Zone 80

DATA IS DEEMED RELIABLE BUT IS NOT GUARANTEED ACCURATE BY THE REALTORS® ASSOCIATION OF EDMONTON. COPYRIGHT 2025 BY THE REALTORS® ASSOCIATION OF EDMONTON. ALL RIGHTS RESERVED. Trademarks are owned or controlled by the Canadian Real Estate Association (CREA) and identify real estate professionals who are members of CREA (REALTOR®, REALTORS®) and/or the quality of services they provide (MLS®, Multiple Listing Service®)

Listing information last updated on April 3rd, 2025 at 11:02pm MDT