

Courtesy Of Yue Wang Of Century 21 Leading

\$574,900 - 6341 King Wynd, Edmonton

MLS® #E4425512

\$574,900

4 Bedroom, 3.50 Bathroom, 1,408 sqft
Single Family on 0.00 Acres

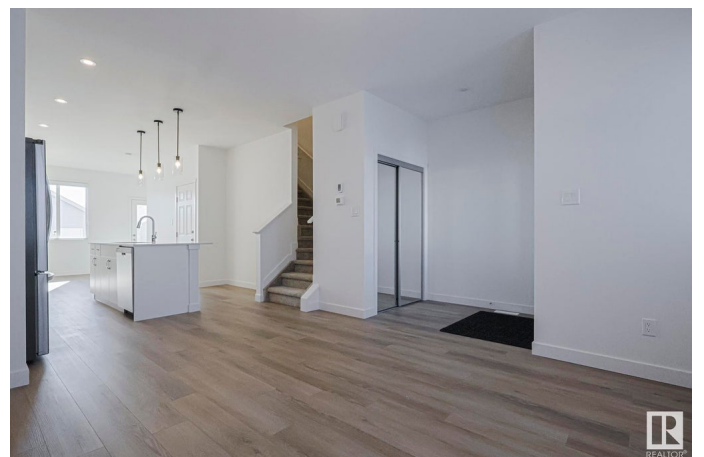
Keswick Area, Edmonton, AB

Welcome this delightful residence nestled in Southwest Edmonton's sought-after Neighbourhood-Keswick. This thoughtfully designed 3-bedrooms home offers a harmonious blend of comfort and functionality, also comes with a LEGAL BASEMENT SUITE—perfect for extended family living or generating rental income. Main Features include: A Modern yet functional kitchen and an open living area on the main level. Three generously sized bedrooms provide ample space for family members, complemented by modern finishes and abundant natural light. A Legal Basement Suite: A fully permitted suite with a separate entrance, offering a self-contained living space ideal for tenants or guests. Modern Amenities: The home boasts contemporary fixtures and fittings, ensuring a comfortable living experience. Keswick is Known for its serene environment and family-friendly atmosphere, It offers residents access to scenic walking trails, parks, and the picturesque North Sask river. A must see.

Built in 2024

Essential Information

MLS® #	E4425512
Price	\$574,900
Bedrooms	4



Bathrooms	3.50
Full Baths	3
Half Baths	1
Square Footage	1,408
Acres	0.00
Year Built	2024
Type	Single Family
Sub-Type	Detached Single Family
Style	2 Storey
Status	Active

Community Information

Address	6341 King Wynd
Area	Edmonton
Subdivision	Keswick Area
City	Edmonton
County	ALBERTA
Province	AB
Postal Code	T6W 5P1

Amenities

Amenities	Ceiling 9 ft., See Remarks
Parking	Double Garage Detached

Interior

Interior Features	ensuite bathroom
Appliances	Dishwasher-Built-In, Dryer, Stacked Washer/Dryer, Washer, Window Coverings, Refrigerators-Two, Stoves-Two
Heating	Forced Air-2, Natural Gas
Stories	3
Has Basement	Yes
Basement	Full, Finished

Exterior

Exterior	Wood, Vinyl
Exterior Features	Landscaped, See Remarks
Roof	Asphalt Shingles
Construction	Wood, Vinyl
Foundation	Concrete Perimeter

School Information

Elementary	Joey Moss School
Middle	Joey Moss School
High	Harry Ainlay School

Additional Information

Date Listed	March 13th, 2025
Days on Market	22
Zoning	Zone 56

DATA IS DEEMED RELIABLE BUT IS NOT GUARANTEED ACCURATE BY THE REALTORS® ASSOCIATION OF EDMONTON. COPYRIGHT 2025 BY THE REALTORS® ASSOCIATION OF EDMONTON. ALL RIGHTS RESERVED. Trademarks are owned or controlled by the Canadian Real Estate Association (CREA) and identify real estate professionals who are members of CREA (REALTOR®, REALTORS®) and/or the quality of services they provide (MLS®, Multiple Listing Service®)

Listing information last updated on April 4th, 2025 at 9:02am MDT