

\$619,900 - 16 Red Crest Way, St. Albert

MLS® #E4425832

\$619,900

3 Bedroom, 2.50 Bathroom, 2,009 sqft

Single Family on 0.00 Acres

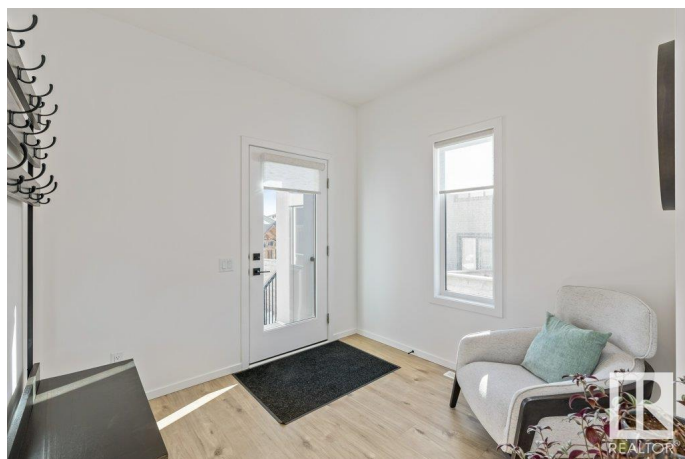
Riverside (St. Albert), St. Albert, AB

Welcome to this almost new over 2000 sqft home with nothing left to do but move in and enjoy! Fully fenced, landscaped, window coverings and CENTRAL AIR CONDITIONING have all been completed! The main floor is trendy and modern and features luxury vinyl plank throughout. The kitchen has ample storage, large island and walk through pantry. The great room features an electric fireplace and is open concept for easy entertaining. Upstairs there are three large bedrooms and a central BONUS ROOM. The primary bedroom has a luxury 5pce ensuite with double sinks and a large walk in closet. On demand hot water heater and double attached garage complete this fantastic family home!

Built in 2023

Essential Information

MLS® #	E4425832
Price	\$619,900
Bedrooms	3
Bathrooms	2.50
Full Baths	2
Half Baths	1
Square Footage	2,009
Acres	0.00
Year Built	2023



Type	Single Family
Sub-Type	Detached Single Family
Style	2 Storey
Status	Active

Community Information

Address	16 Red Crest Way
Area	St. Albert
Subdivision	Riverside (St. Albert)
City	St. Albert
County	ALBERTA
Province	AB
Postal Code	T8N 7Y7

Amenities

Amenities	Carbon Monoxide Detectors, Exterior Walls- 2"x6", Hot Water Tankless, Vinyl Windows, HRV System
Parking	Double Garage Attached

Interior

Interior Features	ensuite bathroom
Appliances	Air Conditioning-Central, Dishwasher-Built-In, Dryer, Garage Control, Garage Opener, Hood Fan, Oven-Microwave, Refrigerator, Stove-Electric, Washer, Window Coverings
Heating	Forced Air-1, Natural Gas
Fireplace	Yes
Fireplaces	Insert
Stories	2
Has Basement	Yes
Basement	Full, Unfinished

Exterior

Exterior	Wood, Brick, Hardie Board Siding, Vinyl
Exterior Features	Fenced, Flat Site, Landscaped, Playground Nearby, Public Transportation, Schools, Shopping Nearby, See Remarks
Roof	Asphalt Shingles
Construction	Wood, Brick, Hardie Board Siding, Vinyl
Foundation	Concrete Perimeter

Additional Information

Date Listed March 14th, 2025

Days on Market 37

Zoning Zone 24

DATA IS DEEMED RELIABLE BUT IS NOT GUARANTEED ACCURATE BY THE REALTORS® ASSOCIATION OF EDMONTON. COPYRIGHT 2025 BY THE REALTORS® ASSOCIATION OF EDMONTON. ALL RIGHTS RESERVED. Trademarks are owned or controlled by the Canadian Real Estate Association (CREA) and identify real estate professionals who are members of CREA (REALTOR®, REALTORS®) and/or the quality of services they provide (MLS®, Multiple Listing Service®)

Listing information last updated on April 20th, 2025 at 5:47am MDT