

Courtesy Of Heather M Joyes Of RE/MAX Excellence

# \$884,900 - 53522 Rge Rd 272, Rural Parkland County

MLS® #E4427914

**\$884,900**

6 Bedroom, 4.00 Bathroom, 2,727 sqft

Rural on 2.15 Acres

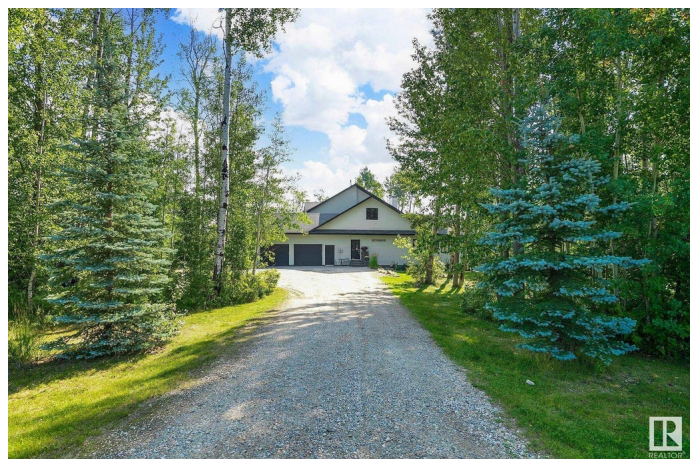
Century Estates (Parkland), Rural Parkland County, AB

Century Estates Custom Built Beauty tucked in a mature TREED 2.15 Acres. This 2700sf+ 2 Story home is fully finished = 4600sf developed and is PRIVATE! Thereâ€™s a large kitchen with loads of cabinetry, counter space, SS appliances, huge island + large walk thru pantry. The kitchen is open to the living room which showcases soaring ceilings, surround sound & slate surrounded wood burning fireplace. Large windows throughout offer views all around of mature trees. \*6 Bedrooms \*Master has a 5 pce ensuite with 6â€™ tub + w/2 walkin closets \*all closets with organizers \*MF laundry with cabinetry \*huge 3 season sunroom \*main floor + basement have INFLOOR HEAT \*turnabout driveway \*O/S heated dble garage interior 25x21 deep \*Cleared for shop with utilities in place \*septic field 2016 \*Timber tech decking \*AIR CON \*luscious landscaping \*perennials \*raised veggie beds. \*\*\*\*All this mere minutes to Spruce Grove & all main thoroughfares. \*\*\*\*

Built in 2005

## Essential Information

MLS® #	E4427914
Price	\$884,900
Bedrooms	6



Bathrooms	4.00
Full Baths	4
Square Footage	2,727
Acres	2.15
Year Built	2005
Type	Rural
Sub-Type	Detached Single Family
Style	2 Storey
Status	Active

### **Community Information**

Address	53522 Rge Rd 272
Area	Rural Parkland County
Subdivision	Century Estates (Parkland)
City	Rural Parkland County
County	ALBERTA
Province	AB
Postal Code	T7X 3N2

### **Amenities**

Features	Air Conditioner, Deck, No Smoking Home
Parking Spaces	6

### **Interior**

Interior Features	ensuite bathroom
Heating	Forced Air-1, In Floor Heat System, Natural Gas
Fireplace	Yes
Stories	3
Has Basement	Yes
Basement	Full, Finished

### **Exterior**

Exterior	Wood
Exterior Features	Fruit Trees/Shrubs, Golf Nearby, Low Maintenance Landscape, Treed Lot
Construction	Wood
Foundation	Concrete Perimeter

### **Additional Information**

Date Listed March 28th, 2025

Days on Market 6

Zoning Zone 70

DATA IS DEEMED RELIABLE BUT IS NOT GUARANTEED ACCURATE BY THE REALTORS® ASSOCIATION OF EDMONTON. COPYRIGHT 2025 BY THE REALTORS® ASSOCIATION OF EDMONTON. ALL RIGHTS RESERVED. Trademarks are owned or controlled by the Canadian Real Estate Association (CREA) and identify real estate professionals who are members of CREA (REALTOR®, REALTORS®) and/or the quality of services they provide (MLS®, Multiple Listing Service®)

Listing information last updated on April 3rd, 2025 at 1:32am MDT