

\$589,000 - 1915 126 Street, Edmonton

MLS® #E4428145

\$589,000

3 Bedroom, 2.50 Bathroom, 2,289 sqft
Single Family on 0.00 Acres

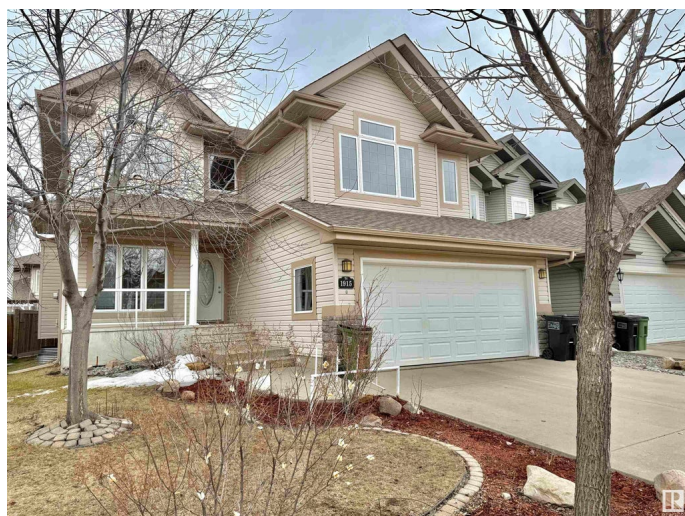
Rutherford (Edmonton), Edmonton, AB

This stunning 2,285 sq. ft. 2-storey home with an attached double garage, built by Kimberly Homes in 2007, is nestled in the desirable Rutherford community of southwest Edmonton. The main floor features 9' ceilings, a spacious office/den, and a modern kitchen with a walk-in pantry and large island—perfect for entertaining. Relax in the huge living room by the cozy gas fireplace. Upstairs, the primary suite offers a 5-piece ensuite and walk-in closet. A massive vaulted bonus room, two additional bedrooms, a full bathroom, and a convenient laundry room complete the level. Enjoy outdoor living on the beautiful deck overlooking a huge backyard—ideal for gardening. Walking distance to Johnny Bright K-9, Dr. Anne Anderson High School, Superstore, parks, and ponds, with easy access to Henday Drive and South Common.

Built in 2007

Essential Information

MLS® #	E4428145
Price	\$589,000
Bedrooms	3
Bathrooms	2.50
Full Baths	2
Half Baths	1



Square Footage	2,289
Acres	0.00
Year Built	2007
Type	Single Family
Sub-Type	Detached Single Family
Style	2 Storey
Status	Active

Community Information

Address	1915 126 Street
Area	Edmonton
Subdivision	Rutherford (Edmonton)
City	Edmonton
County	ALBERTA
Province	AB
Postal Code	T6W 0A5

Amenities

Amenities	Ceiling 9 ft., Deck, Detectors Smoke, Front Porch, Hot Water Natural Gas, No Animal Home, No Smoking Home, Vaulted Ceiling, Vinyl Windows
Parking	Double Garage Attached

Interior

Interior Features	ensuite bathroom
Appliances	Dishwasher-Built-In, Dryer, Garage Control, Garage Opener, Hood Fan, Refrigerator, Stove-Electric, Washer, Window Coverings, See Remarks
Heating	Forced Air-1, Natural Gas
Fireplace	Yes
Fireplaces	Glass Door
Stories	2
Has Basement	Yes
Basement	Full, Unfinished

Exterior

Exterior	Wood, Brick, Vinyl
Exterior Features	Fenced, Flat Site, Landscaped, Playground Nearby, Schools, Shopping Nearby
Roof	Asphalt Shingles

Construction Wood, Brick, Vinyl
Foundation Concrete Perimeter

School Information

Elementary JOHNNY BRIGHT SCHOO
Middle JOHNNY BRIGHT SCHOO
High DR. ANNE ANDERSON SCHOOL

Additional Information

Date Listed March 28th, 2025
Days on Market 6
Zoning Zone 55
HOA Fees 100
HOA Fees Freq. Annually

DATA IS DEEMED RELIABLE BUT IS NOT GUARANTEED ACCURATE BY THE REALTORS® ASSOCIATION OF EDMONTON. COPYRIGHT 2025 BY THE REALTORS® ASSOCIATION OF EDMONTON. ALL RIGHTS RESERVED. Trademarks are owned or controlled by the Canadian Real Estate Association (CREA) and identify real estate professionals who are members of CREA (REALTOR®, REALTORS®) and/or the quality of services they provide (MLS®, Multiple Listing Service®)

Listing information last updated on April 3rd, 2025 at 1:47pm MDT