

## \$529,000 - 54 Greystone Crescent, Spruce Grove

MLS® #E4428167

**\$529,000**

4 Bedroom, 3.50 Bathroom, 1,856 sqft

Single Family on 0.00 Acres

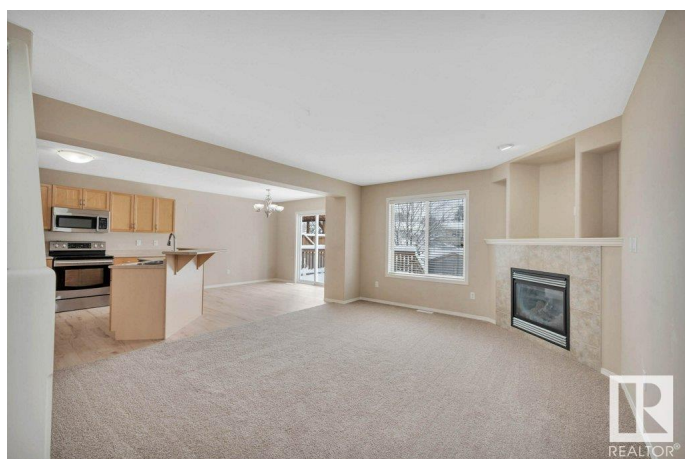
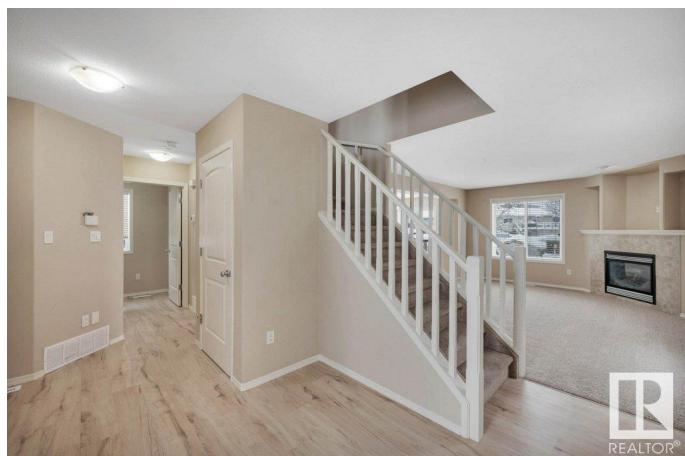
Grove Meadows, Spruce Grove, AB

This fully finished family home offers an abundance of space in a tranquil, family-friendly neighborhood. With 4 spacious bedrooms, 4 bathrooms, and 3 distinct living areas across all three levels, there's plenty of room for growing families to spread out and enjoy. Recent flooring upgrades bring a fresh, modern feel while maintaining a cozy, inviting atmosphere ideal for both entertaining and daily life. The large yard & deck provide ample space for outdoor activities and relaxation. The peaceful neighborhood provides the perfect retreat, yet you're still conveniently close to the Yellowhead for easy access to Edmonton. Located on the desirable East side of Spruce Grove, this home combines the best of both worlds: serenity with convenience. From the open-concept main floor to the finished basement, every inch is designed with comfort in mind. Come see it for yourself—this home is ready to welcome you and your family!

Built in 2006

### Essential Information

MLS® #	E4428167
Price	\$529,000
Bedrooms	4
Bathrooms	3.50



Full Baths	3
Half Baths	1
Square Footage	1,856
Acres	0.00
Year Built	2006
Type	Single Family
Sub-Type	Detached Single Family
Style	2 Storey
Status	Active

### Community Information

Address	54 Greystone Crescent
Area	Spruce Grove
Subdivision	Grove Meadows
City	Spruce Grove
County	ALBERTA
Province	AB
Postal Code	T7X 0A7

### Amenities

Amenities	On Street Parking, Air Conditioner, Deck, Detectors Smoke, Hot Water Natural Gas, No Smoking Home, Vinyl Windows
Parking Spaces	4
Parking	Double Garage Attached, Insulated

### Interior

Interior Features	ensuite bathroom
Appliances	Air Conditioning-Central, Dishwasher-Built-In, Dryer, Garage Control, Garage Opener, Refrigerator, Stove-Electric, Washer
Heating	Forced Air-1, Natural Gas
Fireplace	Yes
Fireplaces	Corner, Glass Door
Stories	3
Has Basement	Yes
Basement	Full, Finished

### Exterior

Exterior	Wood, Vinyl
Exterior Features	Back Lane, Fenced, Landscaped, Low Maintenance Landscape, Paved

Lane, Playground Nearby, Schools, Shopping Nearby

Roof	Asphalt Shingles
Construction	Wood, Vinyl
Foundation	Concrete Perimeter

### School Information

Elementary	Greystone
Middle	St Margeurite
High	Spruce Grove Composite

### Additional Information

Date Listed	March 29th, 2025
Days on Market	22
Zoning	Zone 91

DATA IS DEEMED RELIABLE BUT IS NOT GUARANTEED ACCURATE BY THE REALTORS® ASSOCIATION OF EDMONTON. COPYRIGHT 2025 BY THE REALTORS® ASSOCIATION OF EDMONTON. ALL RIGHTS RESERVED. Trademarks are owned or controlled by the Canadian Real Estate Association (CREA) and identify real estate professionals who are members of CREA (REALTOR®, REALTORS®) and/or the quality of services they provide (MLS®, Multiple Listing Service®)

Listing information last updated on April 20th, 2025 at 11:32am MDT