

\$813,800 - 6638 Knox Place, Edmonton

MLS® #E4429382

\$813,800

3 Bedroom, 3.00 Bathroom, 2,620 sqft

Single Family on 0.00 Acres

Keswick Area, Edmonton, AB

One of Edmonton's Top Builders since 1930, Fekete Homes Homes presents this beautiful custom built 2 Sty in the Arbours of Keswick. Sleek transitional finishes in contemporary color tones. Open concept plan is perfect for those who love to entertain. Meticulously finished w/true care & craftsmanship. Oversized windows maximizes the natural light in all of the spacious rooms & 9 ft ceilings give an added airiness. Dream Chef™'s kitchen w/walk thru pantry. Large island overlooking the GR w/a linear FP & dining area. Main flr den/bedrm w/4 pc bath. Metal railing, luxury vinyl plank flrs, S/S appliances & upgraded 2 toned cabinetry w/quartz counters. 3 large bedrms upstairs, 5 pc bath, laundry rm w/cabinetry/sink, massive bonus rm w/door to reduce sound transfer. Spa like 6 pc ensuite w/tiled O/S shower w/10 mil glass. 26' wide South facing deck w/glass railing. 24X25 garage w/drain, R/I for heater. 2 staged furnace, triple windows & EnerGuide efficient rating. Steps to park/ponds, trails, K-9 school, shops

Built in 2022

Essential Information

MLS® # E4429382

Price \$813,800



Bedrooms	3
Bathrooms	3.00
Full Baths	3
Square Footage	2,620
Acres	0.00
Year Built	2022
Type	Single Family
Sub-Type	Detached Single Family
Style	2 Storey
Status	Active

Community Information

Address	6638 Knox Place
Area	Edmonton
Subdivision	Keswick Area
City	Edmonton
County	ALBERTA
Province	AB
Postal Code	T6W 4A1

Amenities

Amenities	Ceiling 9 ft., Closet Organizers, Deck, No Animal Home, No Smoking Home, HRV System, Natural Gas BBQ Hookup, 9 ft. Basement Ceiling
Parking	Double Garage Attached, Insulated, Over Sized

Interior

Interior Features	ensuite bathroom
Appliances	Dishwasher-Built-In, Dryer, Garage Opener, Hood Fan, Oven-Built-In, Oven-Microwave, Refrigerator, Stove-Countertop Electric, Washer
Heating	Forced Air-1, Natural Gas
Fireplace	Yes
Fireplaces	Mantel
Stories	2
Has Basement	Yes
Basement	Full, Unfinished

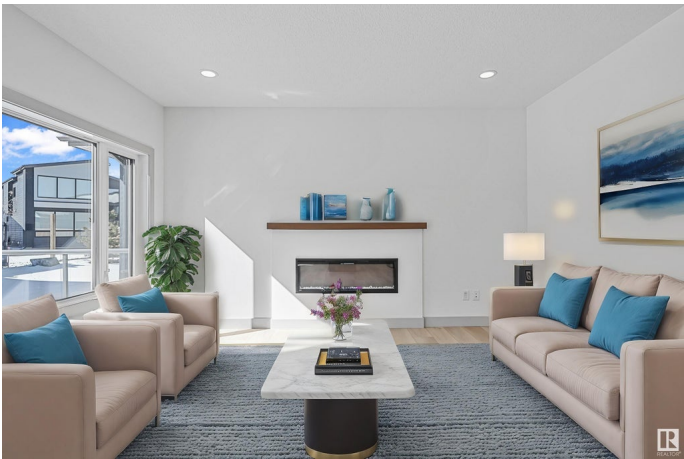
Exterior

Exterior	Wood, Stone, Vinyl
Exterior Features	Cul-De-Sac, Playground Nearby, Schools, Shopping Nearby, Partially

	Fenced
Roof	Asphalt Shingles
Construction	Wood, Stone, Vinyl
Foundation	Concrete Perimeter

School Information

Elementary	Joey Moss/Joan Carr
Middle	Joey Moss/Joan Carr
High	Harry Ainley/MMM



Additional Information

Date Listed	April 5th, 2025
Days on Market	23
Zoning	Zone 56
HOA Fees Freq.	Annually

DATA IS DEEMED RELIABLE BUT IS NOT GUARANTEED ACCURATE BY THE REALTORS® ASSOCIATION OF EDMONTON. COPYRIGHT 2025 BY THE REALTORS® ASSOCIATION OF EDMONTON. ALL RIGHTS RESERVED.Trademarks are owned or controlled by the Canadian Real Estate Association (CREA) and identify real estate professionals who are members of CREA (REALTOR®, REALTORS®) and/or the quality of services they provide (MLS®, Multiple Listing Service®)

Listing information last updated on April 28th, 2025 at 8:02am MDT